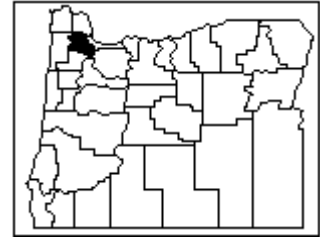


# WASHINGTON COUNTY

The Oregon Child Development Coalition in Washington County improves the lives of children and families primarily through the Migrant Seasonal Head Start and Oregon Head Start programs, as well through as other programs and initiatives, including Home Instruction for Parents of Preschool Youngsters (HIPPY) and Even Start, whereby the agency works to promote family literacy. In addition, for the past three years, the Oregon Child Development Coalition in Washington County has benefited from the federal Early Reading First program designed to prepare young children to enter kindergarten with the necessary language, cognitive, and early reading skills to prevent reading difficulties and ensure school success.



The Oregon Child Development Coalition in Washington County is directed by a County Executive Committee, which includes a County Director, parents of program participants and community representatives. The Oregon Child Development Coalition in Washington County serves a total of 490 children annually. Of these, 388 children are classified as migrant children and 102 are classified as seasonal children. In 2005, the Oregon Child Development Coalition in Washington County served 100 percent of funded enrollment. As of May 2006, average daily attendance was 81 percent.

The Oregon Child Development Coalition in Washington County currently employs a center-based option, serving children from five locations in and around Cornelius, Oregon. The short-term program runs 16 weeks from the end of May through September, operating 34 classrooms, 5 days per week from 5 am to 5 pm. The long-term program runs 32 weeks from April through December operating 7 classrooms, 5 days per week from 8 am to 2 pm.

The service area includes the entirety of Washington County. The recruitment area, however, is limited to western Washington County and determined by three factors: (i) the location of growers as the Oregon Child Development Coalition in Washington County attends to those especially agricultural areas of Washington County, (ii) program center locations and (iii) acceptable transportation times per the Head Start Performance Standards. For illustrative purposes, Appendix C11.1 displays a map containing the service area, as well as grower's locations and program center locations.

## COUNTY SNAPSHOT

### ▶ QUICK FACTS

- Washington County has experienced 10 percent growth in its population over the past 5 years, with areas such as Hillsboro, Oregon, experiencing more rapid growth over the same period.
- The median household income in Washington County is 16 percent higher than the state median, with over 4,000 children under the age of 6 living in poverty and 30 percent of public school children eligible for free and reduced lunch.

*"People are afraid to travel.  
Everything is different this year."*

*-Washington County Grower*



- As of 2006, there are an estimated 1,478 unserved, eligible Head Start children in Washington County with the percentage of unserved, eligible children at 51.9 percent.
- With unemployment at 6.0 percent, Washington County is seeing growth in construction and manufacturing, as well in high tech industries.
- Greenhouses and nurseries are changing the face of agriculture in Washington County, with strawberry, blackberry and raspberry acreage continuing to decline annually in light of international competition and greater mechanization.
- In 2005, there were an estimated 4,523 migrant farmworkers (+15.1% between 2002 and 2005) and 4,374 seasonal farmworkers (+12.5% between 2002 and 2005) in Washington County with the total number of migrant and seasonal children under the age of 6 estimated at 369 children and 201 children, respectively.

## ► CRITICAL ISSUES

- Immigration

Unlike other counties throughout the state in which the U.S. Immigration and Customs were rumored to have visited this year, Washington County growers remained mostly unaffected despite raids of local manufacturing plants in the area.<sup>1</sup> That said, growers cited the indirect effects of such raids, voicing significant concern about *families' fear of traveling this year* and noting that it has been difficult to predict the migration patterns of those families with which they have regular contact.<sup>2</sup>

- Population Growth, Development and Changes in Agriculture

The reality is that growers are in a bind. On one hand, strawberry acreage in Washington County continues to decline which has the effect of keeping families away from the area. Further, as of July 2006, soaring temperatures in the Willamette Valley - an area that includes Washington County - caused irreparable damage to the raspberry harvest. To offset this labor shortage, growers are increasingly turning to machines to harvest blueberries and blackberries; and, according to growers, once they commit to using machines, many families will cease to travel to the area in search of work. If this were not enough, the current immigration debate has exacerbated families' fear of traveling. Thus, it was not surprising this year that growers experienced a labor shortage, with some agricultural labor camps reporting at least 30 vacant units.

## COUNTY PROFILE

### ► GEOGRAPHIC PROFILE

Spanning 727 square miles, Washington County is located in the northwestern portion of Oregon near Oregon's largest city, Portland, and near the Oregon-Washington border. Once favored by

<sup>1</sup> *Portland Plant Caught in U.S. Immigration Sweep*, April 21, 2006, The Oregonian.

<sup>2</sup> Note, according to one grower, 80 percent of the migrant labor supply in Washington County comes from California.



Hudson Bay trappers for its beaver population, the county, originally named Twality, was established in 1843 and was changed to its current name, Washington, in 1849 by the Territorial Legislature in honor of President George Washington.<sup>3</sup>

Average elevation in Washington County is 196 feet above sea level. Average temperatures range from 39 degrees Fahrenheit during the winter months to 67 degrees Fahrenheit during the summer months. The area receives approximately 38 inches of rain annually, including rare snowfalls during the winter months, and is recognized for its fertile farmland, rich soil and, increasingly, its rapid urbanization over the past decade.<sup>4</sup>

Located west of the city of Portland, Washington County ranks as one of the three fastest growing counties in Oregon. This growth has been fueled by several factors. First, Washington County is situated between urban areas such as Portland and the less than one-hour drive to Oregon’s scenic coastline. Second, industry leaders such as Nike, Intel and Tektronix call Washington County home, making both Beaverton and Hillsboro two of Oregon’s largest cities.

Accordingly, land use and development is a heated political issue in this area. In 2006, the Oregon Supreme Court upheld Measure 37, a 2004 law limiting the subdivision of farmland, one which had been found unconstitutional in a county circuit court earlier in the year on the grounds that it upheld the privilege of some but not all residents to own property.<sup>5</sup> As land must remain in at least 80 acre parcels, growers are locked into their investments, unable to absorb losses by selling portions of land off to developers. Thus, to stay competitive, growers find that they must change and respond to market demand, with current trends moving them towards greenhouses, nurseries and vineyards.<sup>6</sup>

► **ECONOMIC PROFILE**

In 2003, the median per capita personal income in Washington County was \$31,675, which falls above the 50th percentile when compared with all other counties across Oregon. In fact, this figure ranks above both those for Oregon (\$29,175) and the United States (\$31,487).<sup>7</sup> Looking at household income, figures from the U.S. Census Bureau show that over 50 percent of households in Washington

**Figure 11.1 - Employment by Sector**

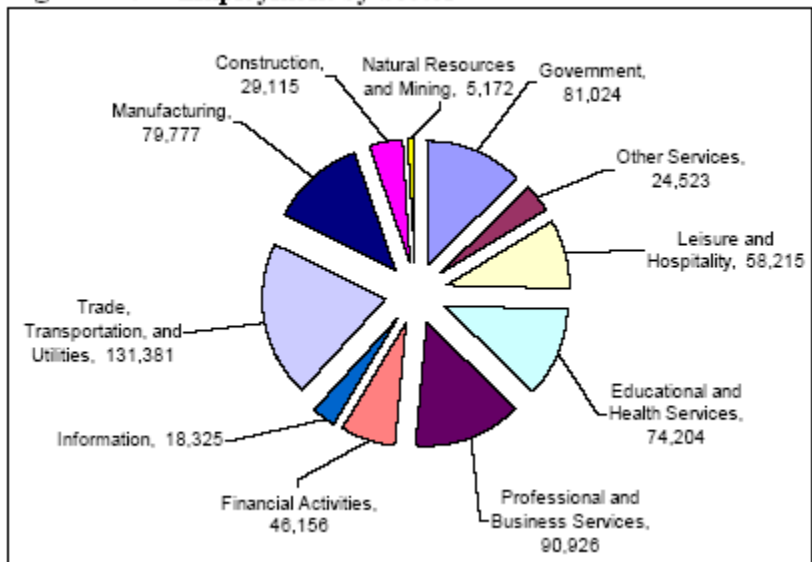


Figure 11.1 - Amy Vander Vliet, *Regional Profile: Industry Employment in Region 2, 2005*, Oregon Employment Department.

<sup>3</sup> Oregon Blue Book, 2006.

<sup>4</sup> Oregon Blue Book, 2006.

<sup>5</sup> *Oregon Supreme Court Upholds Measure 37*, February 21, 2006, Capitol Press.

<sup>6</sup> Laura Oppenheimer, *Values Collide on Oregon Farms*, January 30, 2006, The Oregonian.

<sup>7</sup> *Oregon Per Capita Personal Income: 1986-2004*, November 2005, Oregon Employment Department.

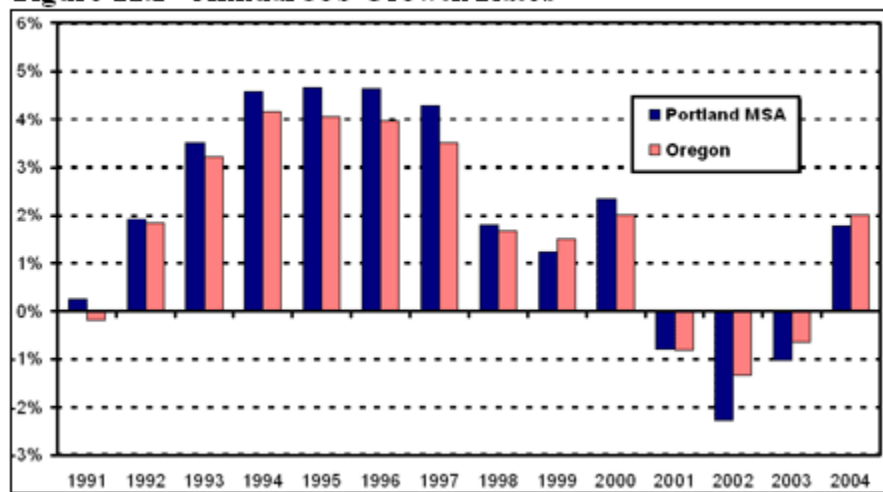


County earn more than \$50,000 per year.<sup>8</sup> In context, this means that a family of four living in Washington County has an average excess of \$6,565 to meet necessary expenses, including rent, food, childcare, transportation, insurance and taxes.<sup>9</sup>

However, Community Action Organization of Washington County has rightly pointed out that, while Washington County affords a certain image of affluence, the reality is that the county's high-tech industries have created an underclass of citizens, mostly service-level employees earning little more than minimum wage (currently \$7.50 per hour).<sup>10</sup> Accordingly, as will be discussed in a later section of this assessment, local services organizations and churches are exploring ways to address this growing gap, focusing on the county's growing homeless population, including those where the household head is actively employed either full-time or part-time.<sup>11</sup>

Washington County has experienced several periods of rising unemployment since 1980, each of which correspond to state and national recessions.<sup>12</sup> Since the recession of 2000-2003, nearly all of the 64,000 jobs lost have been recovered, with nearly 23,000 new jobs added. Manufacturing and construction have led the way, as Intel Corp, Freightliner LLC and Gunderson Inc have increased production in response to greater business investment.<sup>13</sup>

**Figure 11.2 - Annual Job Growth Rates**



Industries currently reporting steady job growth include private education, public schools and professional and business services, adding nearly 2,000 jobs in February 2006 in preparation for tax season. Additionally, as mentioned earlier, leisure and hospitality services continue to grow at a rate of nearly 2,700 jobs annually.<sup>14</sup> The only major industry to post losses during this time was trade, transportation and utilities. However, the Oregon Employment Department expects to

Figure 11.2 – Amy Vander Vliet, *Regional Profile: Industry Employment in Region 2, 2005*, Oregon Employment Department.

<sup>8</sup> DP-3: *Profile of Selected Economic Characteristics*, 2000, United States Census Bureau.

<sup>9</sup> Economic Policy Institute, 2005

<sup>10</sup> *Community Needs Assessment*, 2006, Community Action Organization of Washington County.

<sup>11</sup> Lisa Cromwell, *Homeless, Churches Seek Answer to Growing Problem*, May 2, 2006, Hillsboro Argus.

<sup>12</sup> Amy Vander Vliet, *Regional Profile Labor Force, Employment and Unemployment in Region 2*, Fall 2005, Oregon Employment Department.

<sup>13</sup> Amy Vander Vliet, *Portland Lags Oregon in Job Recovery*, July 26, 2005, Oregon Employment Department.

<sup>14</sup> Amy Vander Vliet, *Portland Metro Labor Trends*, April 2006, Oregon Employment Department.



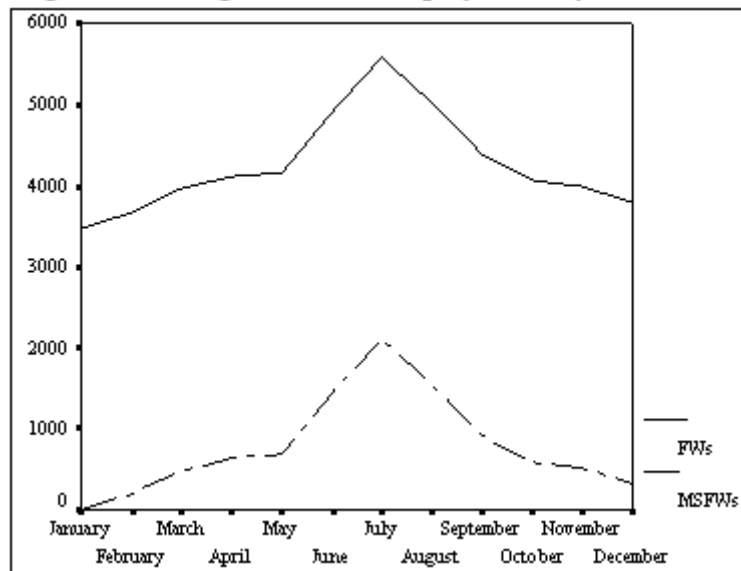
see nearly 20 percent growth in this industry by 2014 given corresponding increases in production, sales and population.<sup>15</sup>

As of February 2006, the unemployment rate in Washington County was 6 percent, nearly 8 percent lower than the state unemployment rate of 6.5 percent, yet still 18 percent higher than the national unemployment rate of 5.1 percent.<sup>16</sup> Further, it is noted that while Washington County's unemployment rate has been declining since 2003, about twice the number of residents are currently out of work as compared to when the recession began, due in part to the county's explosive population growth - nearly 70,000 new residents between 2001 and 2003.<sup>17</sup>

In 2005, nearly 62 percent of Washington County businesses ranked employee training as a high priority.<sup>18</sup> While not included in these figures, agricultural employees are no exception, as many of Oregon's agricultural commodities require skilled labor, including tree pruning, budding, and nursery and greenhouse management. On average, agricultural operations in Washington County employ some 4,268 farmworkers per month.<sup>19</sup> Monthly agricultural employment estimates are shown in Figure 11.3 for both the general population of farmworkers (FWs), as well as for migrant and seasonal farmworkers (MSFWs).<sup>20</sup>

The labor peak corresponds with the [berry] harvests during the summer months, beginning with strawberries. Interviews with local strawberry producers revealed that strawberries were approximately 7-10 days late this year, noting that it takes 1,135 "heat degree days" - defined as the total number of hours during which the temperature falls above specific benchmarks - for strawberries to mature in the Willamette Valley, an area that includes Washington County. Following strawberries, raspberries, blueberries and blackberries are harvested, lasting into September and October when growers will transition into harvesting wine grapes and preparing for Christmas trees.

**Figure 11.3 - Agricultural Employment by Month**



<sup>15</sup> Amy Vander Vliet, *On the Move: Portland's Transportation and Warehousing Industry*, October 26, 2005, Oregon Employment Department.

<sup>16</sup> Amy Vander Vliet, *Portland Metro Labor Trends*, April 2006, Oregon Employment Department.

<sup>17</sup> Amy Vander Vliet, *Regional Profile Labor Force, Employment and Unemployment in Region 2*, Fall 2005, Oregon Employment Department.

<sup>18</sup> *Training and Retaining Oregon's Workforce: Employer's Perspective*, March 2005, Oregon Employment Department.

<sup>19</sup> *2005 Oregon Agricultural Employment Estimates*, 2006, Oregon Employment Department.

<sup>20</sup> *2005 Oregon Agricultural Employment Estimates*, 2005, Oregon Employment Department.



Table 11.1 displays total harvested acreage, production and sales for crops typically utilizing the labor of migrant and seasonal farmworkers in 2004 and 2005. Of interest is that the total number of harvested acres of strawberries declined by nearly 7 percent over the one-year period. Such a decline is not accidental, as strawberry acreage has declined annually over the past 10 years. At this point, what is certain is that Oregon strawberries will never completely be phased out. The reason for this is that growers are often “blackmailed,” in the words of one state of Oregon employee, by berry processors to produce at least a few acres of strawberries to make up for the fact that California strawberries do not have the quality taste and juice that Oregon strawberries have. What is unclear at this time is the point at which harvested acres of Oregon strawberries will stabilize.

**Table 11.1 - Selected Crop Outputs<sup>21</sup>**

Washington County	2004			2005		
	Acres	Production	Sales (in \$000s)	Acres	Production	Sales (in \$000s)
Strawberries	655	7,336	\$3,741	610	7,076	\$3,326
Blackberries	900	6,526	\$4,227	880	6,434	\$4,360
Raspberries	840	2,169	\$3,683	810	2,221	\$3,667
Blueberries	645	5,257	\$4,468	660	5,636	\$4,903
Wine Grapes	1,120	2,240	\$3,382	1,195	2,510	\$3,953
Nursery & Greenhouse	---	---	\$147,500	---	---	\$152,900
Christmas Trees	270	184	\$3,496	270	189	\$3,052

Likewise, the same is true for blackberries and raspberries, with an average decline of 1.9 percent between 2004 and 2005. However, unlike strawberries, growers are harvesting blackberries and raspberries with greater efficiency, increasing the use of berry cultivars that are able to be harvested by machine. They are doing so as international competition has increased, most notably with Chile and countries in Eastern Europe. In fact, at a recent grower’s summit hosted by the Oregon Farm Bureau, an entire work session was spent identifying major international competitors, as well as new berry cultivars, that could help growers remain competitive. Such innovations are no doubt controversial, with growers noting that once they increase the use of machines, they do not expect to go back to harvesting by hand.

The face of agriculture is changing in Washington County. To be sure, the figures in Table 11.1 show that Washington County’s nursery and greenhouse industries are increasingly the barometer of where agriculture is heading. As one of the top counties for nursery and greenhouse sales in the state, Washington County has shown consistent growth in this area over the past three years, with sales increasing by over 4 percent between 2004 and 2005, growth that has had the effect of keeping seasonal farmworkers in the area given more stable employment for up to 10-11 months.<sup>22</sup> Likewise, wine production in Washington County continues to grow, often accompanied by aggressive marketing, promoting wine tours and tasting throughout western

<sup>21</sup> Oregon Agricultural Information Network, 2006.

Unit of production varies by commodity.

<sup>22</sup> Michael Rose, *Washington County Overtakes Marion in Nursery Stock Sales*, September 14, 2005, The Oregonian.



Washington County.<sup>23</sup> Between 2004 and 2005, wine production increased by 12 percent, as did harvested acres and total sales.

To migrant farmworkers, declining strawberry acreage and increasing mechanization of crops means less work in the area, with 88 percent of growers surveyed indicating that they expect to employ about the same number of workers as they did the year before.<sup>24</sup> Further, one farm labor contractor noted that he would employ approximately 150 fewer workers as he had the year prior.<sup>25</sup> A representative from the Oregon Employment Department noted that, once growers commit to using machines to harvest berries, migrant farmworkers are increasingly less likely to travel to the area in search of employment. Thus, the fact that the estimated number of migrant farmworkers in Washington County declined by nearly 11 percent between 2002 and 2005 is not surprising. Seasonal farmworkers, however, have been somewhat more fortunate, as growing nursery and greenhouse industries have meant stable, more long-term employment.

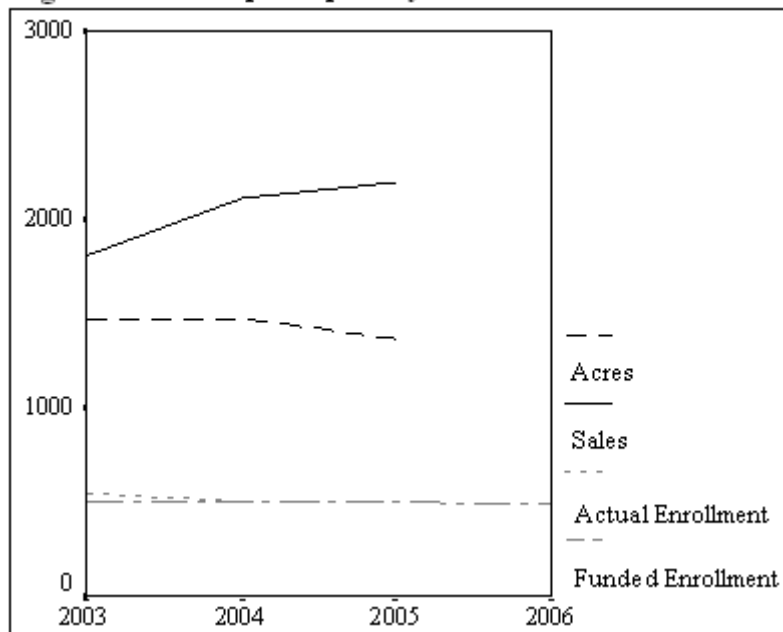
**Table 11.2 - Estimates of Migrant and Seasonal Farmworkers**

	2002	2005
<b>Washington County</b>		
MFWs	3,928	4,523
SFWs	3,888	4,374
<b>Total</b>	<b>7,816</b>	<b>8,897</b>

In 2002, Alice C. Larson estimated the number of migrant and seasonal farmworkers in Washington County.<sup>26</sup>

These estimates, as well as 2005 estimates computed by the Oregon Child Development Coalition, are shown in Table 11.2. Between 2002 and 2005, the number of migrant farmworkers increased by 15 percent, whereas the number of seasonal farmworkers increased by 13 percent. These figures suggest a general increase in the number of migrant families coming to the area; however, such increases are speculative in light of anecdotal information which suggests that, due to changes in agriculture (i.e., declining strawberry acreage, poor strawberry yields over the past few years and a general fear of traveling in light of the current

**Figure 11.4 - Crop Outputs by OCDC Enrollment**



<sup>23</sup> *Helvetia - Helvetia Vineyards & Winery: Grapes 'Sounded Interesting' and a Second Career is Born*, May 4, 2006, The Oregonian.

*Forest Grove - Apolloni Vineyards Couple Embraces 'Italian Way,' Finding a Winemaking Niche*, May 4, 2006, The Oregonian.

*Scholls - Freja Cellars: Go With One - Pinor Noir - Keep It Small, and Run With It*, May 4, 2006, The Oregonian.

<sup>24</sup> *Agricultural Employer Survey*, 2006, Oregon Child Development Coalition.

<sup>25</sup> *Farm Contractor's Survey*, 2006, Oregon Child Development Coalition.

<sup>26</sup> Alice C. Larson, *Migrant and Seasonal Farmworker Enumeration Profiles Study: Oregon, 2002*, Larson Assistance Services.



immigration debate) families are electing not to come to the area.

The above findings are also of importance in program planning for the Oregon Child Development Coalition. Figure 11.4 provides information on harvested acres, total sales, and enrollment counts for the Oregon Child Development Coalition in Washington County.<sup>27</sup> It is important to note that Figure 11.4 does, in fact, confirm that growers in Washington County are reducing acreage over time while seeing regular gains in sales annually. Figure 11.4 also confirms that with declining acreage, actual enrollment in the Oregon Child Development Coalition’s Migrant Seasonal Head Start program has stabilized in recent years. Thus, adequate enrollment planning for the Oregon Child Development Coalition must attend to the issue of declining acreage despite the fact that sales continue to increase over time. Further, according to a representative with the Oregon Employment Department, the county’s berry crop, at one time a barometer for predicting the number of migrant families coming to work in the area, no longer serves such a function exclusively. Additional agricultural commodities such as wine grapes and nursery and greenhouse outputs must also be considered to anticipate changes in the migrant season and in the number of families coming to the area.

► **DEMOGRAPHIC PROFILE**

The 2000 Census reported the population of Washington County to be 445,342 persons. From this, the Population Research Center at Portland State University estimated the population of Washington County to be 489,785 as of July 1, 2005, demonstrating 10 percent growth in the population over the five-year period. Table 11.3 displays these estimates for each of the major cities and towns in Washington County.

Note the steady growth in each of the locations listed. What is clear is that Washington County’s population was growing even during the most recent recession. Of the nearly 70,000 new residents, two-thirds were the product of domestic and international migration.<sup>29</sup> In the 1990s, cutbacks in California’s defense industry prompted a mass exodus of Californians to Oregon and Washington, with 80 percent of Oregon’s new population due to in-migration during this time.<sup>30</sup> Since then, between 2000 and 2004, net migration has somewhat slowed, keeping pace with the county’s natural population increase of approximately 21,000 persons over the four year period.<sup>31</sup>

**Table 11.3 - Population<sup>28</sup>**

	Year		
	2000	2005	Percent Change
Washington County	445,342	489,785	10.0
Banks	1,286	1,430	11.0
Beaverton	76,129	83,095	9.0
Cornelius	9,652	10,585	10.0
Forest Grove	17,708	19,565	10.0
Gaston	600	630	5.0
Hillsboro	70,186	82,025	17.0

<sup>27</sup> Note, the scale in Figure 11.4 has been adjusted. Harvested acres are in 0s and total sales are in \$00,000s. Additionally, crop outputs reflect the set of all crops in the Washington County area, not just those typically employing migrant and seasonal farmworkers.

<sup>28</sup>2004 Oregon Population Report, March 2005, Population Research Center, College of Urban and Public Affairs, Portland State University.

<sup>29</sup>Amy Vander Vliet, *Regional Profile Labor Force, Employment and Unemployment in Region 2*, Fall 2005, Oregon Employment Department.

<sup>30</sup>Amy Vander Vliet, *Regional Profile: Population in Region 2*, Fall 2005, Oregon Employment Department.



The population of Washington County is also growing younger and better educated over the years. The median age in Washington County is 34 years old, nearly 4 years younger than the median age for the state of Oregon.<sup>32</sup> Table 11.4 displays the age distribution for Washington County. As of July 1, 2004, 26 percent of Washington County's population was under the age of 18. Across all age groups, these figures are on average one-half of one percent higher than the statewide average. In general, Region 2 - an area that includes Washington County - boasts the largest proportion of residents between 25 and 39. The draw for young people, it is argued, has to do with the ability of local businesses to attract creative, energetic and entrepreneurial professionals.<sup>33</sup>

**Table 11.4 - Population by Age<sup>34</sup>**

	Age						
	0-4	5-9	10-17	18-29	30-49	50-64	65+
Washington County	37,830	37,093	54,188	85,659	159,459	64,503	41,469

Oregon Housing and Community Services reports that the number of individuals living in poverty in Washington County increased by 61 percent between 1990 and 2000, with the Oregon Department of Education reporting the poverty rate to be 10.1 percent as of January 2006.<sup>36</sup> Further, these two sources also estimate over 4,000 children under the age of 6 to be living in poverty each year, including nearly 1,500 children between the ages of 3 and 4. These figures are important to note for the reason that poverty is often associated with health problems and access to health care, the need for food stamps and temporary assistance to needy families (TANF), and housing and shelter counts.<sup>37</sup>

**Table 11.5 - Free & Reduced Lunch Count<sup>35</sup>**

Washington County	Academic Year	
	2003-2004	2004-2005
Banks School District	243	218
Banks School District	9,886	9,655
Forest Grove School District	3,112	2,850
Gaston School District	190	269
Hillsboro School District	6,561	7,461
Sherwood School District	365	226
Tigard School District	2,873	3,110
<b>Washington County Total</b>	<b>23,230</b> <b>(30.1%)</b>	<b>23,789</b> <b>(30.0%)</b>

During the 2004-2005 school year, 30 percent (n=23,789) of students in Washington County were eligible for free or reduced lunch. As displayed in Table 11.5, relative to the previous academic year, this represents a 2.4 percent increase in the number

<sup>31</sup> 2004 Oregon Population Report, March 2005, Population Research Center, College of Urban and Public Affairs, Portland State University.

<sup>32</sup> Amy Vander Vliet, *Regional Profile: Population in Region 2*, Fall 2005, Oregon Employment Department.

<sup>33</sup> Joe Cortright and Carol Colletta, *The Young and the Restless: How Portland Competes for Talent*, 2005, Imprensa Consulting and Colletta & Co.

<sup>34</sup> 2004 Oregon Population Report, March 2005, Population Research Center, College of Urban and Public Affairs, Portland State University.

<sup>35</sup> *Students Eligible for Free and Reduced Lunch*, 2003-2004 & 2004-2005, Oregon Department of Education

<sup>36</sup> *Estimated Number of Eligible 3 and 4 Year Olds Served and Unserved by Head Start and Oregon Pre-kindergarten*, 2006, Oregon Department of Education.

<sup>37</sup> *County Comparisons: Incidence and Distribution of Poverty*, 2004, Oregon Health and Community Services.



of students receiving free or reduced lunch over the one-year period. This increase was felt especially in the Gaston and Hillsboro School Districts. Such findings are not surprising given that the number of individuals living in poverty in Washington County has also increased in recent years.

► **DATA ANALYSIS: ELIGIBLE, UNSERVED 3-4 YEAR OLD CHILDREN<sup>38</sup>**

The Oregon Department of Education estimated there to be 14,561 children between the ages of 3 and 4 in Washington County in 2006.<sup>39</sup> To estimate the total number of eligible 3 and 4 year old children, the Oregon Department of Education multiplied the total number of children by the poverty rate for Washington County, 10.1 percent. Thus, *the total number of eligible Head Start children in Washington County is 1,478 children*, as displayed in Table 11.6

**Table 11.6 - Estimated Number of Eligible Children**

Washington County	
Total Children	14,561
Percent in Poverty	10.1
<i>Eligible</i>	<i>1,478</i>

From this, the number of Head Start children currently being served in Washington County by Head Start programs is subtracted. Community Action Head Start serves 687 children in Washington County between 3 and 4 years of age annually. Thus, considering the number of eligible Head Start children currently being served, *the total number of unserved, eligible Head Start children is 791* as shown in Table 11.7. Thus, 46 percent of eligible Head Start children are currently being served in Washington County.

**Table 11.7 - Estimated Number of Unserved, Eligible Children**

Washington County	
Eligible	1,478
Served	687
<i>Unserved, Eligible</i>	<i>791</i>

In the sections that follow, the Oregon Child Development Coalition will further refine the estimate in Table 11.7 to provide estimates for the number of unserved, eligible Migrant Seasonal Head Start children in Washington County.

**RACIAL & ETHNIC COMPOSITION**

► **POPULATION & ANCESTRY**

*“The Hispanic population is the fastest growing minority group in the region.”*

*-Amy Vander Vliet  
Regional Economist  
Oregon Employment Department*

Table 11.8 displays the racial and ethnic composition of the population in Washington County. Note, the Hispanic population continues to grow at rate that is 10 times faster than that for the general population.<sup>40</sup> Washington County is one of the most ethnically diverse areas in the state of Oregon, with the two largest minority groups being Hispanics and Asians. This is evidenced by data in Table 11.8 which show that Beaverton and

<sup>38</sup> Note, estimates in this section are presented to highlight the need for Head Start services in the general low-income population. In a later section, additional estimates will be provided which estimate the number of unserved, eligible children of migrant and seasonal farmworkers.

<sup>39</sup> *Estimated Number of Eligible 3 and 4 Year Olds Served and Unserved by Head Start and Oregon Pre-kindergarten*, 2006, Oregon Department of Education.

<sup>40</sup> Amy Vander Vliet, *Regional Profile: Population in Region 2*, Fall 2005, Oregon Employment Department.



Hillsboro each boast significant minority populations, including (but not shown) Somali refugees estimated to number between 500-1000 families, most living in eastern Washington County.<sup>41</sup>

**Table 11.8 - Population by Race, 2000-2005<sup>42</sup>**

Washington County	One Race						Two or More Races	Hispanic
	White	Black	Native Indian	Asian	Native Hawaiian	Some Other Race	---	---
2000	366,007 (82.2%)	5,119 (1.1%)	2,913 (0.7%)	29,752 (6.7%)	1,325 (0.3%)	26,100 (5.9%)	14,126 (3.2%)	49,735 (11.2%)
Banks	1,172	5	4	23	6	36	40	1,286
Beaverton	59,615	1,324	507	7,349	272	4,211	2,851	76,129
Cornelius	6,622	73	120	100	27	2,347	363	9,652
Forest Grove	14,425	77	158	374	42	2,017	615	17,708
Gaston	530	---	5	1	---	42	22	600
Hillsboro	54,391	858	577	4,585	177	7,285	2,313	70,186
2005	395,158 (79.7%)	6,787 (1.4%)	3,657 (0.7%)	39,805 (8.0%)	2,132 (0.4%)	30,017 (6.1%)	18,041 (3.6%)	69,219 (14.0%)

Of the population in Washington County, 85 percent were born in the United States, with 81 percent of the population as monolingual English speakers.<sup>43</sup> Of those born outside of the United States (n=63,438), 9.7 percent are currently not U.S. citizens, with 7.6 percent having entered the United States between 1990 and 2000, and 43 percent of those born outside of the United States coming from Latin America. Accordingly, aside from English and relative to other languages, 9.5 percent of the population identified as primary Spanish speakers (n=39,174).<sup>44</sup> Of these, more than one-half self-identified as able to speak English less than “very well.”

► **PROFILE OF PROGRAM PARTICIPANTS<sup>45</sup>**

In 2004, 462 children were enrolled in the Migrant Seasonal Head Start program on the basis of public assistance or income eligibility. Further, the number of over-income children enrolled in 2005 decreased by 8 families from the previous year. Table 11.9 displays the age distribution for children enrolled in the Migrant Seasonal Head Start program. Overall, 517 program participants were of Hispanic or Latino origin, which includes persons of Cuban, Mexican, Puerto Rican, South and Central American or other Spanish culture or

**Table 11.9 - Enrolled of Children by Age**

Age	Number of Children
<1	48
1	49
2	132
3	131
4	90
5	69
<b>Total</b>	<b>519</b>

<sup>41</sup> *Community Needs Assessment*, 2006, Community Action Organization of Washington County.

<sup>42</sup> *Fact Sheet*, 2000-2005, American Community Survey, United States Census Bureau.

Note, 2005 data from the U.S. Census Bureau is not available for all counties in Oregon.

<sup>43</sup> *DP-2: Profile of Selected Social Characteristics*, 2000, United States Census Bureau.

<sup>44</sup> *DP-2: Profile of Selected Social Characteristics*, 2000, United States Census Bureau.

<sup>45</sup> Data is taken from the *Program Information Report*, 2004 & 2005, Oregon Child Development Coalition.



origin. The majority of these were primary Spanish speakers, with additional program participants as primary English speakers and indigenous language speakers. Indigenous languages are typically spoken by those program participants from the Oaxaca region of Mexico and include the dialects of Mixteco and Trique. Increasingly, the Oregon Child Development Coalition of Washington County has served indigenous families and continues to develop partnerships to support this population.

► **DATA ANALYSIS: ELIGIBLE, UNSERVED MIGRANT CHILDREN<sup>46</sup>**

The Oregon Child Development Coalition has developed a method for estimating the number of children of migrant and seasonal farmworkers in Washington County using Alice C. Larson’s 2002 estimates of migrant and seasonal farmworkers and family members as a base, and agricultural

information from the Oregon Agricultural Information Network through Oregon State University. The estimates in Table 11.10 suggest that there were 369 migrant children and 199 seasonal children in Washington County in 2005.

**Table 11.10 - Estimated Migrant and Seasonal Children**

Washington County		
Age	Number Migrant Children	Number Seasonal Children
<1	164	36
1	41	33
2	41	33
3	41	33
4	41	33
5	41	33
<b>Total<sup>47</sup></b>	<b>369</b>	<b>201</b>

To estimate the number of unserved, eligible Migrant Seasonal Head Start children, the number of children currently being served in Washington County by the Oregon Child Development Coalition’s Migrant Seasonal Head Start program is subtracted from the estimates in Table 11.10. The Oregon Child Development Coalition of Washington County serves 490 Head Start eligible children through the Migrant Seasonal Head Start Program, 388 of which are migrant children and 102 of which are seasonal children. Thus, the total number of unserved, eligible Migrant Seasonal Head Start children in Washington County is 99 children and is broken down in Table 11.11. Overall, roughly **80 percent of eligible Migrant Seasonal Head Start children are currently being served in Washington County.**

Similar to other counties, results of the above analysis indicate that the Oregon Child Development Coalition is

**Table 11.11 - Unserved, Eligible MHS Children in Washington County**

Washington County		
	Number Migrant Children	Number Seasonal Children
Eligible	~369	~201
Served	388	102
<b>Unserved, Eligible</b>	<b>~0</b>	<b>~99</b>

<sup>46</sup> See Appendix C1.3

<sup>47</sup> Totals vary due to rounding.



adequately serving the migrant population in Washington County, a population that, based on anecdotal information, appears to be declining year to year. Thus, overall, there continues to be a decline in the number of eligible, migrant children in the area, and that, aside from capacity issues, the Oregon Child Development Coalition in Washington County could serve more seasonal children.

## **STRENGTHS & NEEDS**

In the section that follows, each program and related service area is discussed. External data from secondary sources and community organizations are used at the beginning of each subsection to construct a framework for specific strengths and needs. Internal data is then used at the close of each section to demonstrate that program management, staff and parents of program participants actively participated in the construction and development of this document.

### **► EDUCATION**

#### **Adult Education**

The median level of education in Washington County is some college, no degree, with 24 percent of the total population having earned a bachelor's degree or higher.<sup>48</sup> This reinforces the earlier discussion of changing population demographics - namely, that Washington County residents are typically better educated relative to residents from other areas of the state. Data from the Oregon Department of Education show total public school enrollment in Washington County to be approximately 77,129 students annually, 30 percent of which are non-white.<sup>49</sup> Across all high schools in Washington County, the total number of high school dropouts is 785 students with a 10.8 percent high school dropout rate over the past four years.<sup>50</sup> The Oregon Department of Education also reports that 15 students dropped out of high school during the 2003-2004 school year specifically because they did not speak English well enough, while another 112 students dropped out citing a lack of adequate parental support in pursuing their high school degree.

Data on the educational attainment of parents of program participants from the Oregon Child Development Coalition's Program Information Report show that 84 percent of parents served by the Oregon Child Development Coalition in Washington County have less than a high school degree. And, in fact, of all families served by the Oregon Child Development Coalition in Washington County, only 8 are enrolled in either job training or school, suggesting that seasonal agricultural work and low wages require that both parents work to make ends meet.<sup>51</sup>

The following is a breakdown of agencies providing education services to children and families in Washington County. In the area of adult education:

---

<sup>48</sup> *DP-2: Profile of Selected Social Characteristics*, 2000, United States Census Bureau.

<sup>49</sup> Oregon Department of Education, 2004-2005.

<sup>50</sup> Oregon Department of Education, 2003.

<sup>51</sup> *Program Information Report*, 2005, Oregon Child Development Coalition.



- Centro Cultural, located in Cornelius, provides a number of adult education courses, including the Hispanic Education and Literacy Program (HELP), ESL, Citizenship, computer courses, and GED and high school equivalency courses in conjunction with technical schools in Mexico City. Centro Cultural and the Oregon Child Development Coalition in Washington County are currently sharing calendars to coordinate trainings and activities.
- The Washington County Sheriff's Office provides education programs, including driver's education courses. All courses are offered in English and Spanish.

Representatives from the above agencies were surveyed to determine the greatest educational needs of children and families in the Washington County area. Of greatest importance was continued outreach to mothers with children while building cultural competency to direct attention to Somali refugees in eastern Washington County and indigenous farmworkers from Mexico and Central America in western Washington County. It was also noted that families continue to fall further and further behind economically. In fact, Community Action Head Start reports that 85 percent of their enrolled families earned less than \$9,000 in 2005. In short, according to one respondent, the safety net is not there for families in need. Thus, it was noted that local services agencies must continue to collaborate in developing joint staff trainings, activities and in sharing space so as to address this need.

A focus group with parents of program participants noted that they continue to enroll in GED classes, with one parent remarking that she plans to earn her GED and eventually work towards her B.A. degree in Psychology. Parents also cited linguistic barriers for children when they are away from the program, noting that children are often isolated at home and would benefit from more activities in the community focusing on English language acquisition in a group setting.

### Early Childhood Education

In the area of early childhood education, the Oregon Child Development Coalition has an interagency agreement with Community Action Head Start, currently funded to serve 685 Early Head Start and Head Start children. An interview with director of Community Action Head Start revealed new opportunities for the Oregon Child Development Coalition to further involve itself in early childhood education related issues through the Vision Action Network which has been hosting Kindergarten Readiness Forums with an emphasis on connecting local service providers to anticipate changes in local communities and leverage resources. With the recent 1 percent cut for Head Start programs across the nation, home and center-based programs in Washington County have undergone changes that will, it was noted, impede the ability of Head Start programs to integrate with public schools and other services in the community.



Other programs that serve the migrant population include Migrant Education. Seasonal and age-specific enrollment counts are displayed in Table 11.12 for the following school districts: Forest Grove, Banks, Gaston, Hillsboro and Beaverton. As all but the latter are located in or near western Washington County, these figures attest to the fact that a greater number of migrant families live and work in more rural areas.

**Table 11.12 - Migrant Education Enrollment<sup>52</sup>**

Washington County	2004-2005		
	Forest Grove/ Banks/ Gaston	Hillsboro	Beaverton
Regular Enrollment	954	2,345	923
Summer Enrollment	244	1,209	169
<b>Total Enrollment</b>	<b>1,198</b>	<b>3,554</b>	<b>1,092</b>
<1 year old		8	
1		20	
2		55	
3		139	
4		134	
5		38	
<b>Total Enrollment</b>		<b>394</b>	

Partnerships in the area of early childhood education include:

- Community Action Head Start of Washington County (Region X Head Start) and the Oregon Child Development Coalition of Washington County have developed an interagency agreement, which focuses on jointly implementing strategies in such areas as recruitment, transitions, health, disabilities, and training and technical assistance.
- The Oregon Child Development Coalition operates a Home Instruction for Parents of Preschool Youngsters (HIPPY) program in Washington County, serving 128 children annually, providing 30 weeks of home visits and group meetings with weekly contact between staff and families.
- The Oregon Child Development Coalition operates PODER - Spanish for “power” or “strength” - serving 20-25 families annually, as part of the Western Washington County Literacy Collaborative to increase communication skills through family education and prepare both children and families to enter kindergarten.
- The Northwest Regional Education Service District provides a range of education and support services to children, families and local providers.
- The Washington County Cooperative Library Services joins 12 local libraries and offers a number of children’s programs, including a summer reading program and a lending library. They also work with Virginia Garcia Memorial Health Center, providing outreach to farmworkers living in farm labor camps and are working to continue building capacity in this area.

In an interview with the Education Manager for the Oregon Child Development Coalition in Washington County, it was revealed that the use of the Creative Curriculum is adequately facilitating the training of teachers and the goal setting process with parents. Opportunities exist for the Oregon Child Development Coalition to continue working on issues of teacher recruitment and retention, as well as policies and procedures to promote the integration of

<sup>52</sup> Oregon’s Migrant Education Regional Programs, 2004-2005, Oregon Department of Education.



services (e.g., education and health) in the classroom. Likewise, a focus group with parents of program participants revealed that parents view the Migrant Seasonal Head Start program as a quality-learning environment, citing the program's emphasis on education, assistance and advocacy.

## ► MENTAL HEALTH & DISABILITIES

Mental health disorders affect approximately 1 in 10 children in Oregon, with 30 percent of these children experiencing co-occurring disorders requiring dual diagnoses. The Office of Mental Health Services with the Oregon Department of Human Services estimates there to be approximately 8,491 children with some sort of mental health issue in Washington County under the age of 18, of which 849 are estimated to suffer from co-occurring disorders.<sup>53</sup> Overall, approximately 5,700 adults and 2,300 children receive some form of community based mental health care in Washington County each year.

While the Health Resources and Safety Administration has not identified Washington County as a mental health professional shortage area,<sup>54</sup> it is noted that of the estimated 1,478 children living in poverty in Washington County, an estimated 148 of these children require mental health services. Data from the Oregon Child Development Coalition's Program Information Report show that 7 children in Washington County were provided mental health services in 2005. On average, mental health professionals spent 14 hours per month on-site. Likewise, **39 children were determined to have a disability, roughly 22 percent of enrolled seasonal children and 23 percent of enrolled migrant children in 2005.** Of these 39 children, each was determined eligible to receive special education and related services. Primary disabilities included speech or language impairments, non-categorical developmental delays, and mental retardation.<sup>55</sup>

The following is a breakdown of the agencies providing services - both in the areas of mental health and disabilities - to children in Washington County.

- The Oregon Child Development Coalition in Washington County shares an interagency agreement with Early Intervention.
- Lifeworks provides a contracted mental health consultant focusing on stress management and parenting skills, including *Incredible Years* parenting classes. Additionally, under Lifeworks, outreach workers - or *promotoras* - make home visits to work with parents and children.
- Through a service agreement, Morrison Child and Family Services provides consultation to the Oregon Child Development Coalition during its pre-service training and the long-term program.
- For two years, St. Alexander's Catholic Church in Cornelius has been offering targeted church services (e.g., Mass) for families with children with disabilities, serving approximately 25 families each week.

---

<sup>53</sup> *Oregon Data Book*, 2003, Oregon Department of Human Services, Office of Mental Health and Addiction Services.

<sup>54</sup> *Oregon Health Professional Shortage Areas (HPSA): Mental Health Designations as of 2/28/06*, 2006, Health Resources and Services Administration (HRSA), Bureau of Health Professionals.

<sup>55</sup> *Program Information Report*, 2004 & 2005, Oregon Child Development Coalition.



Representatives from the above agencies were surveyed to determine the greatest mental health and disabilities needs of children and families in the Washington County area. Respondents pointed to unacceptable wait times when referring children to the Washington County Mental Health Department and the limited [Spanish] resources available to children and families in the community. Especially for parents, there are limited counseling services available that are both affordable and culturally and linguistically appropriate, a problem that is further complicated for speakers of indigenous languages. However, recent interest by the Oregon Health and Sciences University in working with St. Alexander's Catholic Church may result in the creation of parent training workshops and additional site visits. Over the long-term, it was noted, the creation of a daycare for children with disabilities may help to address the need for greater services in the community.

A focus group and interview with parents of program participants and the Mental Health and Disabilities Coordinator for the Oregon Child Development Coalition in Washington County revealed that fatherhood involvement remains an important issue. One parent expressed concern that her child was "acting out" because the father was "not around" and not involved. Interestingly, during this focus group, it was the other parents in attendance who noted the existence of groups meeting in the community around this and other issues, namely - groups at Virginia Garcia Memorial Health Center and at Tuality Healthcare. Parents did, however, cite a lack of consistency and regularity of group participants and meeting schedules. This concern was echoed by the Mental Health and Disabilities Coordinator for the Oregon Child Development Coalition in Washington County who noted that the agency is continuing to explore creative strategies for parents to become more involved in support groups and other activities in the community.

## ► HEALTH & NUTRITION

In August of 2005, the Oregon Office of Rural Health released a report identifying healthcare shortages and under-service in western Washington County, including the areas of Banks, Cornelius, Forest Grove and Gaston, all areas currently served by the Oregon Child Development Coalition.<sup>56</sup> This report confirms others released by the Oregon Department of Human Services, identifying both medical and dental shortages in this area, as well as migrant and seasonal farmworkers as a medically underserved population.<sup>57</sup>

*"We are broadening our definition of what it is to be culturally appropriate."*

*-Gil Munoz  
Executive Director  
Virginia Garcia Memorial Health Center*

In 2005, there were 896 doctors in Washington County, or just shy of 2 doctors for every 1,000 residents.<sup>58</sup> In Washington County, approximately 16.5 percent of the population is without any form of health insurance, with some institutions such as the Oregon Health and Sciences University reporting that, of the 258,885 visits from Washington County residents in 2004, 79 percent were only partially or not reimbursable.<sup>59</sup>

<sup>56</sup> *Oregon Medically Underserved Areas/Populations (MUA/MUP)*, 2005, Oregon Office of Rural Health.

<sup>57</sup> *Oregon Health Professional Shortage Areas, Dental Designations as of 2/28/2006*, Health Resources and Services Administration, Bureau of Health Professionals.

<sup>58</sup> *Active and Practicing Physicians in Oregon by Geographic Region and per 100,000 Population*, 2005, Oregon Public Health Services, Oregon Department of Human Services.

<sup>59</sup> *2004 Percentage Without Health Insurance by Region*, 2004, Oregon Office of Rural Health. *OHSU and Washington County Statistics*, 2004, Oregon Health and Sciences University.



In the preceding section, children's mental health was discussed and it was noted that children's mental health is often tied to a number of risk factors including poverty status, low birth weight, abuse and neglect, and family history.<sup>60</sup> Over the past several years, the number of live births with low-birth rate has increased in Washington County. In 2004, the rate of low birth was 61.9 (n=471), whereas in 2001, the rate of low birth had been as low as 55.8 (n=419).<sup>61</sup> A similar trend is noted for live births with *very* low birth weight, with the rate of very low birth increasing to 12.5 (n=95) in 2004 from 10.7 (n=80) in 2001.<sup>62</sup>

The increasing rate of low-birth may in part be due to limited resources focusing on prenatal care. In 2004, 3.8 percent live births in Washington County were also identified as lacking adequate prenatal care, a rate that is significantly different from the rate for the state of Oregon of 5.8.<sup>63</sup> Since 2001, this figure represents a 33 percent increase in the number of live births with inadequate prenatal care. It is also noted that the percent of live births with inadequate prenatal care among Hispanics (8.7 percent statewide) is generally higher than that of non-Hispanics.<sup>64</sup> Thus, the increase in the percent of live births with inadequate prenatal care, while to be interpreted cautiously, may reflect actual disparities in care.

The following is a breakdown of the agencies providing health and dental services to children and families in Washington County.

- The Oregon State WIC program serves 14,158 children under the age 5 and 5,842 pregnant women annually, with 65 percent of those served in Washington County at or below the poverty level.<sup>65</sup>
- The Washington County Health Department provides core public health services, including family planning, disease prevention, investigation, immunization, environmental health, home visiting, and maternal child health.
- The Oregon Health and Sciences University provides patient care and education in Washington County, receiving over 250,000 visits annually, 79 percent of which were only partially or not reimbursable.
- Virginia Garcia Memorial Health Center provides medical, dental and onsite services to nearly 20,000 patients per year, including over 3,000 migrant and seasonal farmworkers. Of these, 81 percent are Hispanic and 73 percent do not have health insurance.<sup>66</sup> Virginia Garcia Memorial Health Center is currently partnering with Tuality Healthcare to increase capacity, with plans to expand offices onto the campus of Tuality Healthcare.
- Tuality Healthcare, with support from their foundation, offers a range of services, including health classes, prenatal care outreach, and other initiatives including partnering with local parishes to identify those parishioners with medical backgrounds to serve as

---

<sup>60</sup> Note, individual risk factors are discussed in Health and Family Services sections of this assessment.

<sup>61</sup> *Live Births with Low Birthweight by County, Oregon Residents, 2001-2004*, Oregon Department of Human Services.

<sup>62</sup> *Live Births with Very Low Birthweight by County, Oregon Residents, 2001-2004*, Oregon Department of Human Services.

<sup>63</sup> *Prenatal Care by Mother's County of Residents, Oregon Residents, 2004*, Oregon Department of Human Services.

<sup>64</sup> *Prenatal Care by Mother's Race and Ethnicity, Oregon Residents, 2004*, Oregon Department of Human Services.

<sup>65</sup> *2005 WIC Facts, 2005*, Oregon WIC Program, Oregon Department of Human Services.

<sup>66</sup> *Frequently Asked Questions, 2006*, Virginia Garcia Memorial Health Center.

Above quotation is taken from Ayesha McAdams-Mahmoud, *Her Heart Still Inspires*, July 3, 2005, The Oregonian.



resources in the community. They also provide meeting space to local non-profit organizations.

- Pacific University, in partnership with Tuality Healthcare and Virginia Garcia Memorial Health Center, has developed a Hillsboro office for the College of Health Professions on the campus of Tuality Healthcare. Degrees offered will include the fields nursing and dental sciences.
- In partnership with Kaiser Permanente, the Washington County Department of Health operates the Essential Health Clinic which focuses on screenings and referrals. They are open on Monday and Thursday in the afternoon/evening and are looking to expand into Tigard, Oregon.
- Northwest Medical Teams and Dr. April Love provide additional dental services and support to families.

Representatives from the above agencies were surveyed to determine the greatest medical and dental needs of children and families in the Washington County area. Virginia Garcia Memorial Health Center noted that they are currently serving about 25 percent of the population in need. Affordable healthcare and insurance were identified as primary needs by multiple service agencies. One respondent estimated that over 50 percent of the Hispanic population is without any form of health insurance, resulting in limited preventive care, particularly dental care. During an interview with a local grower, it was learned that many agricultural employees in the area are, in fact, offered health insurance; however, they choose not to take it because of the regular monthly deductions from their paychecks. This individual also noted that this is particularly an issue for more short-term employees who are in the area to make as much money as possible before moving on.

Medical providers also cited difficulties in engaging Anglo families, specifically around their willingness to work with a case manager. According to providers, Anglo families feel a greater sense of entitlement to health care and, as such, are less likely to cooperate with case managers. This problem is further compounded by the fact that many of these families work low-wage, service level jobs. In the words of one medical director, “Families lack stable employment and income. This contributes to their economic fragility. So, they can’t get ahead.” Together, these factors work to limit the resources that these families are able to seek out and secure. Accordingly, local medical providers are continuing to work to network local providers and thereby increase the safety net.

Data from the Oregon Child Development Coalition’s Program Information report show that 289 children entered the Migrant Seasonal Head Start program in Washington County in 2005 with health insurance, up by 50 percent from 2004.<sup>67</sup> The majority of those with some form of insurance were covered by the Oregon Health Plan (n=186), as well as by Medicaid and private insurance. For those without health insurance, the Oregon Child Development Coalition has worked with families to reduce the number of children without health insurance by 11 percent following enrollment. Additionally, most children (n=326) receive services through a migrant community health center with common health conditions including anemia, obesity, asthma, vision and hearing difficulties.

---

<sup>67</sup> *Program Information Report, 2004 & 2005*, Oregon Child Development Coalition.



In 2005, following dental screenings, 403 children were identified as needing continued dental treatment and care. An interview with the Health Manager for the Oregon Child Development Coalition in Washington County revealed some concern about limited dental treatment options in the community beyond screenings, as well as transportation barriers faced by families in getting to medical and dental appointments. Also mentioned during this interview was the lack of services for lead testing. Unlike in neighboring Multnomah County where the Health Department does this free of charge, such services do not yet exist in Washington County.

A focus group with parents of program participants revealed that the majority of parents utilize Virginia Garcia Memorial Health Clinic for care and, in the event that they do not have insurance, are utilizing the option to pay in installments. They also noted that in some cases providers have not been able to accommodate new patients, thereby requiring that families wait for appointments, thereby limiting the reach of preventive care and forcing some individuals to seek care only when extensive treatment is needed such as in a medical or dental emergency.

▶ **FAMILY SERVICES**

In 2004, the Oregon Department of Human Services released figures estimating the number of child abuse victims in Washington County to be 1,161, nearly a 48 percent increase from the previous year.<sup>68</sup> These figures amount to approximately 9 child abuse victims per 1,000 children. Additionally, shelter counts in Region 2 - an area which includes Washington County - show that 577 children under the age of 6 spent one or more nights in shelter in 2005, with the total number of actual *child nights* equal to 16,562.<sup>69</sup> These regional figures are the highest in Oregon, with over 9 percent of those receiving shelter services for 30 days or more. Related to this, during the 2004-2005 school year, 623 students in the Beaverton, Forest Grove and Hillsboro School Districts were homeless.

*“The safety net is not there...”*  
*-Executive Director*  
*Non-profit agency in Cornelius, Oregon*

In 2005, the Oregon Food Bank hosted a focus group in Washington County focusing on food insecurity. During this focus group it was noted that, in addition to hardships around securing childcare and medical care, families cannot afford quality fruits and vegetables. Additionally, homeless families cited difficulties around storing and preparing food.

*“Peaches cost \$2, so I don’t buy peaches or other expensive fruit.”*  
*-Focus group participant*  
*OR Food Bank Voices Project*

Each month in Washington County, approximately 34,185 individuals receive food stamps, with 4,661 receiving TANF cash assistance.<sup>70</sup> Figure 11.5 displays the above figures over time. According to the Oregon Department of Human Services, between 2005 and 2006, the number of TANF cases has decreased by nearly 15 percent, while the number of food stamp cases as increased by nearly 2 percent over the same period.

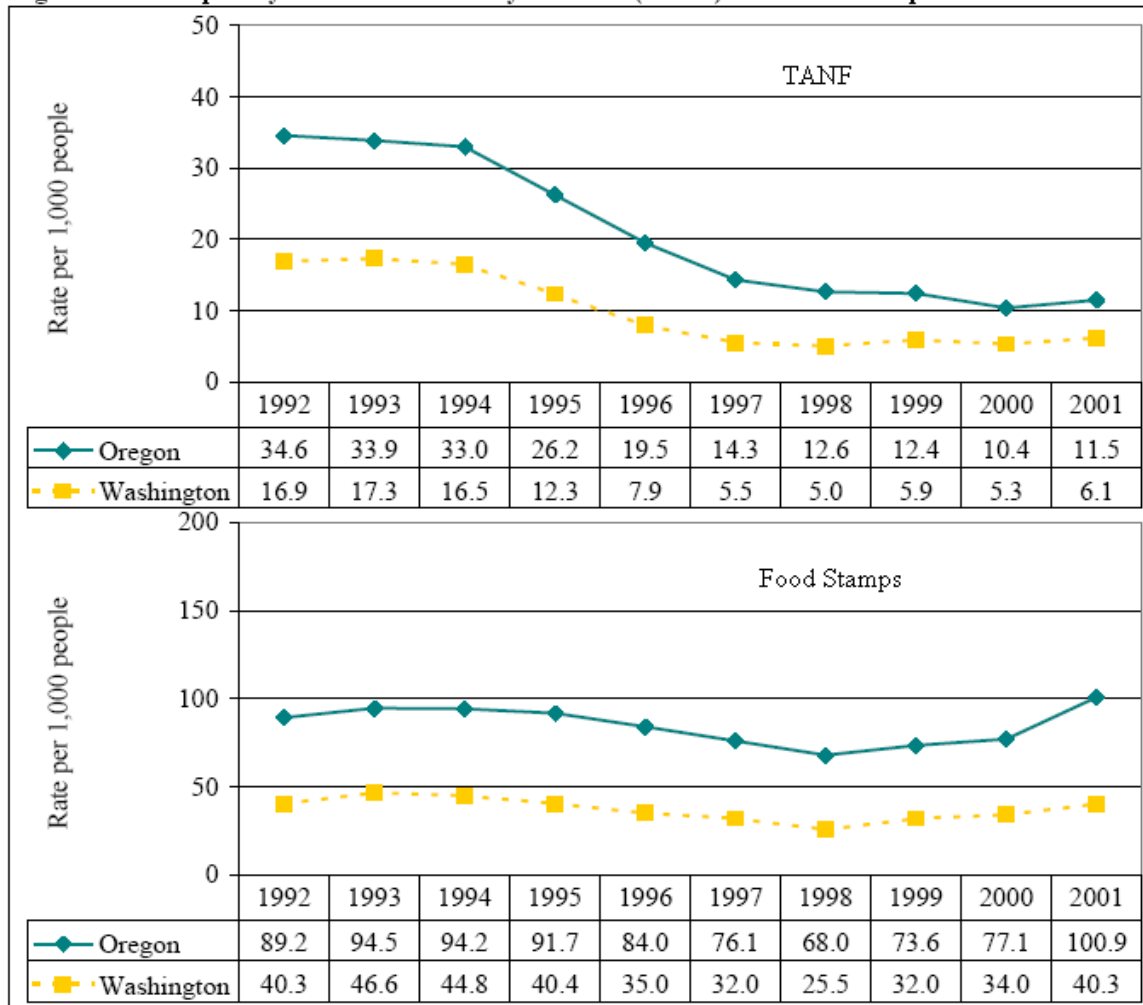
<sup>68</sup> *The State of Children in Oregon’s Child Protective System*, 2004, Oregon Department of Human Services.

<sup>69</sup> *Summary of Services Provided by Domestic and Sexual Violence Service Programs Funded by DHS*, 2005, Oregon Department of Human Services.

<sup>70</sup> *Voices*, 2005-2006, Oregon Food Bank.



**Figure 11.5 Temporary Assistance to Needy Families (TANF) and Food Stamps**



The following is a breakdown of the agencies providing family and social services to children and families in Washington County.

- The Oregon Child Development Coalition in Washington County has developed an interagency agreement with the local Child Care Resource and Referral provider to facilitate referrals.
- The Oregon Department of Human Services has offices in Washington County providing social and health related services to children, adults and families, as well as to seniors and people with disabilities.
- The Oregon Food Bank’s Washington County Services provides 39 food pantries, 9 emergency meal programs and 52 supplemental programs. Each month, 36,924 food boxes are distributed, serving some 12,566 individuals.<sup>71</sup>
- The Family Resource Center provides food assistance and medical referrals to over 200 families each month. An interview with the director revealed that this figure is increasing

Figure 11.5 – *Washington County Data Book*, 2002, Office of Mental Health and Addiction Services, Oregon Department of Human Services.

<sup>71</sup> *Regional Food Banks at a Glance*, 2005, Oregon Food Bank.



annually and that they are seeing growth in the Ethiopian, Iranian, East Indian and indigenous Mexican populations.

- Local leadership opportunities and memberships for the Oregon Child Development Coalition in Washington County includes the Oregon Childhood Care and Education Coordinating Council, the Oregon Department of Human Services' Child Care Task Force, and Latino social service provider networks.
- The Domestic Violence Resource Center provides information and shelter services to victims of domestic abuse and their children.
- The Washington County Sheriff's Office provides information and referral services in both English and Spanish focusing primarily on education and driver training.

Representatives from the above agencies were surveyed to determine the greatest family services needs of children and families in the Washington County area. It was noted that families - especially primary Spanish speaking families - experience barriers when attempting to access services. These include not only linguistic and cultural barriers, but also financial barriers such as the inability to pay. These barriers are further complicated by the lack of affordable housing in the area, a topic that will be explored in more detail in a later section of this assessment. In short, respondents indicated that families need assistance with navigating the system. To be sure, one respondent noted that families often give up if they, after repeated attempts, are unable to access services.

Thirteen percent of all families served by the Oregon Child Development Coalition in Washington County in 2005 identified as single parent families. In each case was the parent or guardian employed; whereas, of the total number of two-parent families, 97 percent had both partners in the workforce.<sup>72</sup> In 2004, 7 families received benefits under the TANF program. In addition, the Migrant Seasonal Head Start program responded to a range of family needs, the most common being emergency and crisis intervention, housing assistance and parenting education.

A focus group and interviews with parents of program participants and the Family Service Manager and Parent Involvement Coordinators for the Oregon Child Development Coalition in Washington County revealed that families continue to depend on several primary services in the area - those of the Migrant Seasonal Head Start program, the Oregon Department of Human Service, local churches and parishes, and schools. However, for families living in agricultural labor camps, it was noted that the Oregon Child Development Coalition's Migrant Seasonal Head Start program is one of the only [educational] resources for families. Currently, joint efforts are being made between the Oregon Child Development Coalition and Centro Cultural in providing outreach to agricultural labor camps, as well as for staff trainings and parent meetings. Next steps include enlisting support and resources from local growers to assist with transporting families to appointments and classes.

Likewise, the Family Services Manager for the Oregon Child Development Coalition in Washington County noted that efforts are being made to coordinate recruitment and referrals with local services agencies (e.g., the Oregon Department of Human Services and Community

---

<sup>72</sup> *Program Information Report, 2004 & 2005, Oregon Child Development Coalition.*



Action Organization), as well as with growers in California and Texas. These relationships will be especially important as agricultural changes unfold which will continue to affect the number of migrant families coming to the area each year.

Parents also noted the need for the Oregon Child Development Coalition to increase visibility in the community. One parent who has lived in the area and worked in agriculture for several years revealed that he did not find out about the Migrant Seasonal Head Start program until 3 years after he settled in the area. To address this, the Oregon Child Development Coalition has begun a series of annual trainings on leadership and relationship building in local communities. Such trainings will be accompanied by the development of a strategic resource development and marketing plan, including public relations and outreach materials.

► **CHILDCARE**

The Oregon Childcare Research Partnership lists a total of 872 certified childcare providers in Washington County, with approximately 16,272 childcare slots. These figures translate into 17 childcare slots for every 100 children, 8 slots short of the state benchmark of 25 childcare slots per 100 children.<sup>73</sup>

Depending on family type, the Oregon Childcare Research Partnership found that nearly 39 percent of some families with children under the age of 13 use some form of paid childcare in Washington County, with 24 percent of all children enrolled in some form of paid childcare. In addition, the report found that families use on average nearly 33 hours of paid childcare per week.

Childcare costs in Region A - an area that includes most of Washington County - are the highest in the state, with the median hourly and monthly costs listed in Table 11.13. Researchers

**Table 11.13 - Childcare Costs by Type of Care**

	Family Childcare		Certified Family Childcare		Center Based Childcare	
	Hourly	Monthly	Hourly	Monthly	Hourly	Monthly
Infant	\$2.39	\$393	\$2.66	\$424	\$3.29	\$526
Toddler	\$2.12	\$361	\$2.39	\$382	\$3.18	\$509
Pre K	\$2.12	\$340	\$2.22	\$359	\$2.34	\$372

from Oregon State University found a statistically significant difference in childcare costs between Region A and other regions of the state of Oregon, suggesting a unique childcare market in this area due to its proximity to urban areas such as Portland.<sup>74</sup> Further, this research suggests that the childcare subsidy rate provided by the Oregon Department of Human Services is adequate to purchase only one-fifth of market rate childcare slots in Washington County.

The following is a breakdown of some of the agencies providing childcare and related services to children in Washington County.

<sup>73</sup> *Estimated Supply of Childcare in Oregon as of July 1, 2004*, April 26, 2005, Oregon Childcare Research Partnership.

<sup>74</sup> *2004 Oregon Childcare Market Rate Study*, August 2004, Oregon State University Family Policy Program, Oregon Childcare Research Partnership.



- Childcare Resource and Referral in Washington County seeks to make approximately 2,000 referrals annually. They also provide childcare provider trainings, as well as Child Development Associates (CDA) courses.
- There are 160 certified childcare centers and 568 family childcare homes operating throughout Washington County. In addition, there are an unspecified number of exempt childcare providers.

Representatives from the above agencies were surveyed to determine the greatest childcare needs of children and families in the Washington County area. Of notable interest is that respondents spoke primarily in terms of equipping childcare providers as a strategy for increasing the stock of quality childcare in the area. Specifically, respondents identified the need to work with providers on issues of insurance, affordable trainings (e.g., First Aid, CPR, Food Handlers, etc), and culturally and linguistically appropriate trainers. One home provider also noted that the cost of gas in transporting children consumes approximately 50 percent of her food budget, costs that she must absorb out of pocket. Further, this respondent was hesitant to charge families more than her current \$2.00 per hour rate, as many of the families she serves survive off of minimum wage.

From these interviews, it was learned that opportunities exist for the Oregon Child Development Coalition in Washington County to assist in the training and professional development of childcare providers in working with local agencies and opening up CPR and First Aid trainings to the community to help minimize training costs associated with the childcare certification process. Additionally, it was noted that there is an opportunity to provide assistance in the area of [online] CDA courses that are linguistically appropriate.

In 2004, 70 children in the Migrant Seasonal Head Start program received childcare in the home of a relative or acquainted adult.<sup>75</sup> Individual interviews with county management team members for the Oregon Child Development Coalition in Washington County revealed that childcare is an issue currently affecting all service areas given the recent switch to a 6 hour day for the agency's long-term program. This is an issue that will continue to be at the forefront as the County Director of the Oregon Child Development Coalition in Washington County noted that more families are staying in the area each year, thereby requiring some continued combination of early childhood education and childcare services.

## ► **TRANSPORTATION & HOUSING**

It was noted in an earlier section that Washington County affords a certain image of affluence that tends to overshadow a growing underclass of service and agricultural workers. It is perhaps this image of affluence that prevents certain vital services from reaching those most in need. Perhaps nowhere is this more evident than in the area of transportation. Eastern Washington County is serviced the Tri-County Metropolitan Transportation District of Oregon (TriMet), with frequent bus and light rail service to the Portland metro area and new routes planned primarily according to office and retail employment. Western Washington County, however, has no such services, a frequent concern mentioned by local service providers and parents during individual interviews and focus groups.

<sup>75</sup> *Program Information Report, 2004*, Oregon Child Development Coalition.



The following is a breakdown of the agencies providing transportation services in Washington County.

- TriMet links eastern Washington County with the Portland metro area, serving 575 square miles and is seeing growing ridership by 16 percent annually.<sup>76</sup> TriMet also provides travel trainings and services through Ride Connection.
- Ride Connection offers individualized transportation services such as U-Ride, a shared ride system designed to provide a partial solution to the absence of public transportation in western Washington County. Providing approximately 27,000 rides in west Washington County in 2005, U-Ride offers Job Access services for low-income commuters living in remote rural locations. However, as of August 2006, funding for this program is to be discontinued until replacement funding can be obtained.<sup>77</sup>
- The Oregon Child Development Coalition in Washington County continues to work with the Oregon Department of Education's Pupil Transportation on training bus drivers.

Representatives from the above providers were surveyed to determine the greatest transportation needs of children and families in the Washington County area. It was noted that for TriMet to expand services in Washington County, a minimum of 15 riders per hour is required. Thus, because this level of ridership takes time to develop in suburban areas, there is a general lack of service in some areas of Washington County. This situation is further strained by the loss of funding for the U-Ride program as of August 2006, the result of which will be the loss of nearly 30,000 rides in western Washington County annually.

An interview with the Transportation Coordinator for the Oregon Child Development Coalition in Washington County revealed that the shift to a 6-hour day for the long-term program has posed some difficulties in the area of transportation, particularly in route planning and working within the one-hour framework per the Head Start Performance Standards. It was also noted that this change may inhibit the ability of the agency to attract and retain qualified drivers. Accordingly the Oregon Child Development Coalition in Washington County continues to work closely with the Oregon Department of Education's Pupil Transportation in training bus drivers.

As mentioned earlier in this assessment, Washington County is growing, seeing an influx of individuals from California and other areas of the country. Between 2000 and 2001, the number of building permits issued per 1,000 residents rose by 5 percent, nearly 2 percent faster than the same figure for the state of Oregon.<sup>78</sup> Appendix C11.2 contains a map of locations of low-income housing complexes, manufactured home parks and farm labor camps in relation to the location of childcare providers in Washington County.

- At least 22 apartment complexes in Washington County cater to low-income and farmworker families, including the Montebella, the Jose Arciga Apartments and Elm Park Apartments. Overall, there are at least 2,344 units.
- There are 45 manufactured home parks in Washington County, 19 of which are located in western Washington County.

---

<sup>76</sup> *Ridership Statistics and Demographics*, 2006, TriMet.

<sup>77</sup> *Washington County Specialized Transportation*, 2006, Ride Connection.

<sup>78</sup> *Oregon Data Book*, 2003, Oregon Department of Human Services, Office of Mental Health and Addiction Services.



- There are 13 farm labor camps in Washington County operated by multiple growers. Together, these camps are able to accommodate 1,386 individuals.
- Washington County Housing Services provides assistance to 13,000 individuals each year through rental assistance, self-sufficiency programs, and services to non-English speakers.
- The Housing Development Corporation of Washington County (HDC) is a 13-year-old nonprofit organization that develops, manages and owns farmworker housing in Washington County.<sup>79</sup>
- Community Action Organization's Housing and Homeless Services provides shelter services to 20-25 families, with representatives from the program noting that both space and rental assistance are limited.

Representatives from the above facilities were surveyed to determine the greatest housing needs of children and families in the Washington County area. The lack of affordable housing continues to be a key issue for low-income and farmworking families in Washington County, particularly those on the brink of being homeless. Respondents were quick to note that families surviving off of minimum wage cannot afford rents upwards of \$650 for a two-bedroom apartment. Further, it has also been documented that deposit amounts and year long leases act as additional impediments to the financial well-being of low-income families.<sup>80</sup>

**A Portrait of a Farm Labor Camp**

*Camp ABC houses both families and unaccompanied workers. It is among the worst housing observed throughout the course of this research. It consists of unattractive dilapidated small wooden cabins lacking kitchens, bathrooms, water, and electricity. The units lack windows and are very dark inside. The common area bathrooms reek. No laundry facilities exist in the premises. According to two residents, the water is not suitable for drinking. One farmworker said that he had to start buying water for cooking and drinking after he saw chunks of dirt coming out of the faucet and after his young daughter became ill. The units are overcrowded. Families and groups of between four and eight live in one room without partitions. Sixty units house more than 300 persons. Families living at the camp stated the rent is \$200 per cabin. Outreach workers have stated that persons staying during the winter face severe climate conditions without heat. Countless abandoned vehicles, where more farmworkers live, add to the unattractive and desolate appearance of the camp. One migrant family stated that they only stayed there because other housing was unavailable. This was the most affordable housing they could find.*

<sup>79</sup> This excerpt, as well as the one in the box below, are taken from *Housing for Families and Unaccompanied Migrant Farmworkers*, August 1997, Housing Assistance Council.

<sup>80</sup> *Housing for Families and Unaccompanied Migrant Farmworkers*, August 1997, Housing Assistance Council.



**DATA ANALYSIS: IDENTIFICATION AND PRIORITIZATION OF ISSUES**

**► SWOT ANALYSIS**

A SWOT analysis identified the following strengths, weaknesses, opportunities and threats for the Oregon Child Development Coalition in Washington County in carrying out its mission to improve the lives of children and families.

**Figure 11.6 Strengths, Weaknesses, Opportunities and Threats**

Strengths	Weaknesses
<ul style="list-style-type: none"> <li>* Bilingual, bicultural parent and staff trainings are recognized as a resource in the community.</li> <li>* Medical providers continue to develop resources towards partnering and expanding to serve migrant and seasonal farmworkers.</li> <li>* The Oregon Child Development Coalition in Washington continues to build community partnerships benefiting children and families.</li> </ul>	<ul style="list-style-type: none"> <li>* Greater opportunities are needed both internally and externally to promote service area integration and more resources for families.</li> <li>* Head Start programs in Washington County lack capacity to adequately serve the growing population of seasonal and Hispanic families in the area.</li> </ul>
Opportunities	Threats
<ul style="list-style-type: none"> <li>* There are opportunities for continued advocacy and partnerships in the community to promote parent involvement and integration.</li> <li>* There are opportunities to build mutually beneficial relationships with growers to enhance the agency’s ability to predict migration patterns and crop conditions.</li> <li>* Parents have expressed a desire to explore the process of becoming registered childcare providers, working in partnership with the agency and with Childcare Resource and Referral.</li> </ul>	<ul style="list-style-type: none"> <li>* Continued in-migration and development of rural lands contribute to higher home prices and rents.</li> <li>* Poor berry harvests and labor shortages are prompting growers to increasingly move toward mechanization.</li> <li>* Changes in agriculture and the limited number of slots for seasonal families threaten to increase the number of unserved, eligible Head Start children in Washington County, as well as the number of families in need of quality childcare.</li> </ul>

**► KEY RECOMMENDATIONS BY SERVICE AREA**

The following recommendations are provided to meet the requirements set forth by the Head Start Performance Standards, 45 CFR 1305, thereby providing a tool for the Oregon Child Development Coalition of Washington County to (i) evaluate the program philosophy, and migrant and seasonal objectives, (ii) determine the most needed component services, (iii) specify the recruitment area(s) and related limitations, (iv) determine appropriate locations for centers, and (v) further establish recruitment and selection criteria for children and families. Note, these service area recommendations follow from the above SWOT analysis and are intended to compliment those recommendations provided in the state level assessment.



### **Observations and Recommendations: OCDC in Washington County**

**Observation:** In light of the current immigration debate, a collaborative response is needed on the part of service agencies and local business to educate the general public and enlist support for the agency.

**Recommendation:** In collaboration with local providers of services to the migrant population, continue to cultivate relationships with the agency's base - growers - and lead efforts to unify groups and service organizations toward advocating for families.

**Observation:** While the Oregon Child Development Coalition in Washington County continues to adequately serve the migrant population, there is a need to grow capacity to increase component and childcare services to families.

**Recommendation:** Connect to venues and collaborative opportunities that will allow the agency to advocate for children and families, as well as educate the community, toward the goal of expanding partnership opportunities and leveraging additional support.

### **Observations and Recommendations: Education**

**Observation:** While the Oregon Child Development Coalition in Washington County continues to successfully transition children, additional work in this area is needed to ensure support for additional needs once children have transitioned.

**Recommendation:** Continue to host open houses for elementary school principles and community members to familiarize them with the Migrant Seasonal Head Start program and explore additional strategies to address individual family needs which may arise during transitions.

**Observation:** A recent 1 percent cut in Head Start funding has resulted in limited resources for Head Start programs in Washington County.

**Recommendation:** Continue to grow partnership opportunities aimed at sharing teachers and staff, especially to support expressed needs for bilingual, bicultural personnel.

### **Observations and Recommendations: Mental Health and Disabilities**

**Observation:** A need exists to continue to support parents in identifying and securing bilingual mental health resources and venues in the community.

**Recommendation:** A starting point in this process, Tuality Healthcare provides meeting space to non-profit organizations. Such space may prove useful in bringing multiple service providers to address and respond to limited mental health resources.



### **Observations and Recommendations: Health and Nutrition**

**Observation:** The Oregon Child Development Coalition in Washington County continues to contract with a pediatric dentist for dental screenings and treatment, thereby ensuring that children continue to receive adequate care.

**Recommendation:** Collaborative efforts between Pacific University, Virginia Garcia Memorial Health Center, and Tuality Healthcare may result in additional resources for children and families.

**Observation:** In general, providers in the area lack information and resources on the importance of lead poisoning and the need for lead screenings. Additionally, the high cost of lead poisoning inhibits the ability to treat.

**Recommendation:** Work with the Oregon Department of Human Services in the Tri-County area - Multnomah County, for example, does lead testing free of charge - to develop strategies (e.g., grants, partnerships, interagency agreements) which will ensure the availability of such services.

### **Observations and Recommendations: Family Services**

**Observation:** It is increasingly becoming more difficult to track the migration patterns of families to the area, most especially how many families will in fact travel to the area each year.

**Recommendation:** Collaborate with growers and other Family Service Managers employed by the Oregon Child Development Coalition throughout the state of Oregon to explore joint recruiting trips to areas such as California and Texas.

**Observation:** The nursery industry continues to grow in Washington County, as does the population of seasonal families in the area.

**Recommendation:** Continue to build name recognition with local nurseries to identify those families that have been in the area for more than two years, yet who remain unserved.

### **Observations and Recommendations: Childcare**

**Observation:** There is a need for joint trainings in the community which focus on building cultural competency and involving early childhood education and childcare staff and parents.

**Recommendation:** Continue to take a proactive leadership role in providing and participating in joint staff trainings with Childcare Resource and Referral - as well as local childcare providers - to further develop staff and promote childcare provider certification.



**Observation:** Parents of program participants have expressed a desire to obtain the certification to become licensed childcare providers in the state of Oregon.

**Recommendation:** In collaboration with Childcare Resource and Referral, use venues such as parent meetings and information workshops to recruit and encourage parents to begin the certification process.

### **Observations and Recommendations: Transportation and Housing**

**Observation:** Especially for those living in farm labor camps, transportation remains a primary impediment for children and families in getting to appointments, meetings and running necessary errands.

**Recommendation:** Continue to build collaborative relations with other service and transportation providers aimed at increasing services and routes to currently unserved and underserved populations in the area.

**Observation:** Low-income and farmworking families in Washington County continue to fall farther behind, unable to afford housing in the area in light of long waiting lists and high rents.

**Recommendation:** Continue to refer families to employment training services to build marketable skills that ensure their competitiveness in the job market.

### **SUMMARY**

The Oregon Child Development faces two obstacles in continuing to effectively serve the migrant population in Washington County. First, the agency must continue to build relationships with growers to increase its ability to predict the number of families in the area and to recruit. Second, the agency must also work with those families transitioning into seasonal status and those transitioning out of agriculture to ensure that they have the skills necessary to compete.

Growth in the Washington County area will continue to exacerbate growing disparities between those with and without means. Thus, it is imperative that the agency build capacity to address the needs not only of those coming into the program, but also those transitioning out. This conclusion finds support from secondary data, as well as from interviews with staff which highlight that there are a number of opportunities in the community for continuing to ensure these transitions and the integration of families into the life the community in a way that ensures that they continue to secure needed services.

