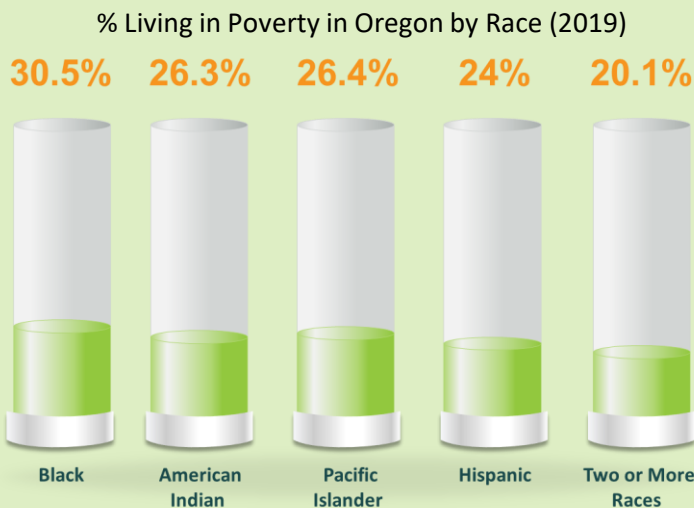
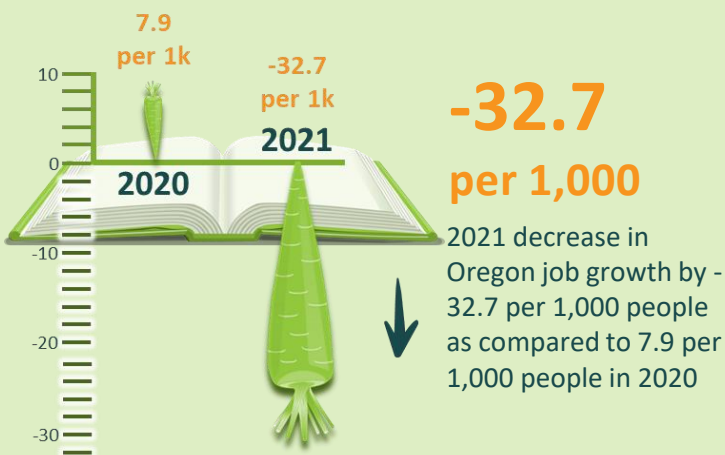
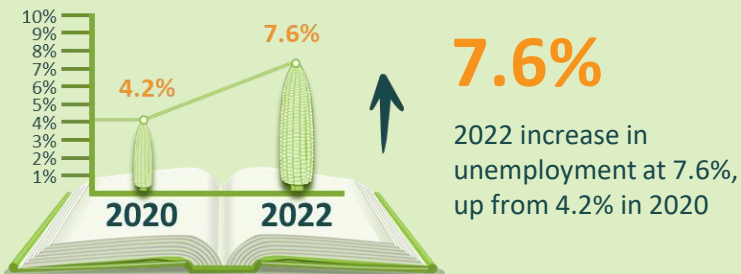


# 2023 OCDC Community Assessment FACTS AND DEMOGRAPHICS

Presented by the Oregon Child Development Coalition



**\$27.65** 2021  
**\$25.14** 2020

Wage Oregon households must earn per hour to afford rent on a two-bedroom without paying more than 30% of their income on housing



**57%**

of total income families pay for every child enrolled in childcare in Oregon (for those earning 25% of median household income) (2021)



**44%**

% of Oregon households in financial hardship-earn above FPL, but not enough to cover basic needs (2020)



**216%**

Increase in H-2A certifications in Oregon between 2021 (3,163) and 2022 (10,009)



# 2023 OCDC Community Assessment FACTS AND DEMOGRAPHICS

Presented by the Oregon Child Development Coalition



**21%**

of Oregon renter households were living in poverty (2021)

**59,800**

# childcare jobs lost between Feb 2020 and Feb 2023



**8.3%**

increase in food prices between March 2022 and March 2023



**37.62%**

Decrease in number of Spanish-Speaking childcare centers in the U.S. (2020)

**3 in 5**

U.S. rural communities do not have sufficient childcare slots (2018)

**60%**

of Hispanic/Latina/o/x families living in childcare deserts (2018)

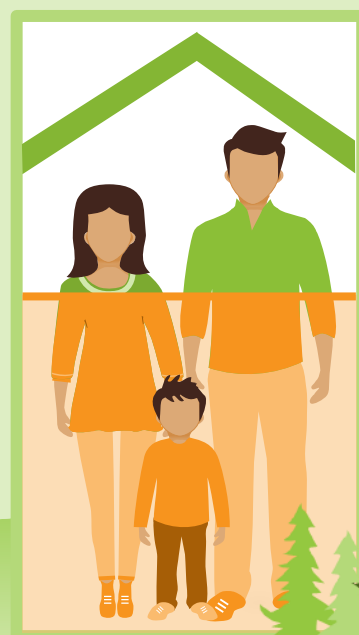
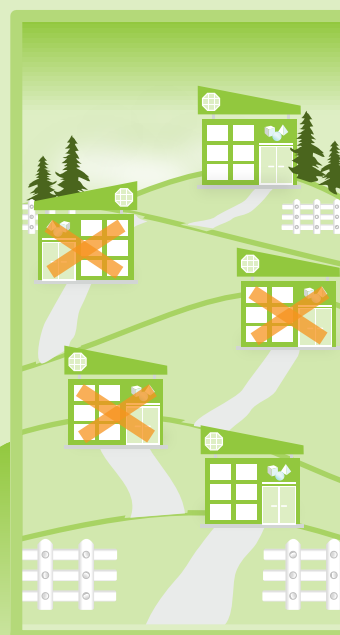
**-4,500**

Number of people who left the U.S. childcare industry between Sept - Nov 2021 (one-third of its workforce)



**-3,700**

Number of people who left the U.S. childcare industry in Dec. 2021 alone

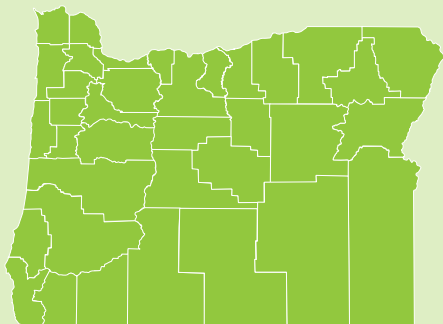


# 2023 OCDC Community Assessment FACTS AND DEMOGRAPHICS

Presented by the Oregon Child Development Coalition

**100%**

All of Oregon counties are a childcare desert for infants/toddlers (2020)



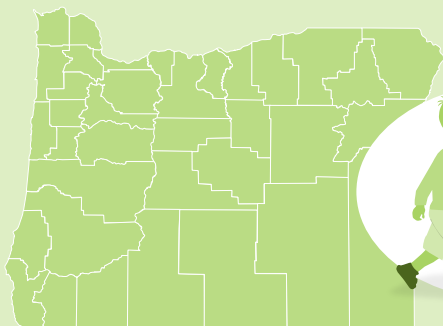
**6.9%**

% increase in Head Start-eligible children living at or below FPL from 2014 to 2019



**25 of 36**

Oregon counties are a childcare desert for children 3-5 (2020)



**15.4%**

of Oregon children under 18 in food insecure households (2021)

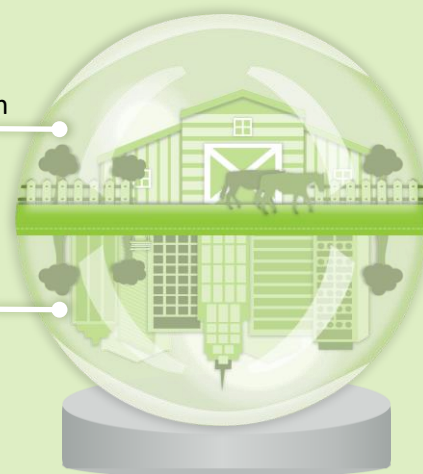
## 2022 Foster Children

12.5 per 1,000 children

Rural Areas

6.4 per 1,000 children

Urban Areas



**92%**

of Oregon Infants/toddlers without access to regulated childcare slot 2020 (5% increase from 2018)

**76%**

% of Oregon preschoolers without access to regulated childcare slot 2020 (10% increase from 2018)



**66.4%**

of Oregon's children up-to-date on well child visits

# 2023 OCDC Community Assessment FACTS AND DEMOGRAPHICS

Presented by the Oregon Child Development Coalition

**71%** of Oregon's Children were up-to-date on immunizations (2019)

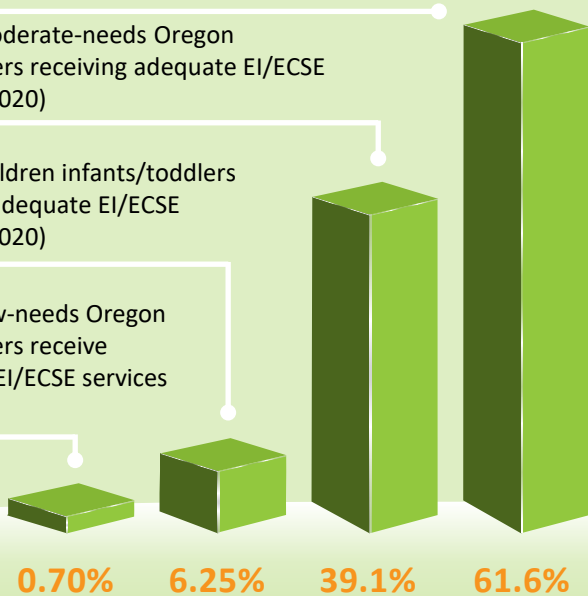


Eligible high-needs preschoolers receiving adequate EI/ECSE services (2020)

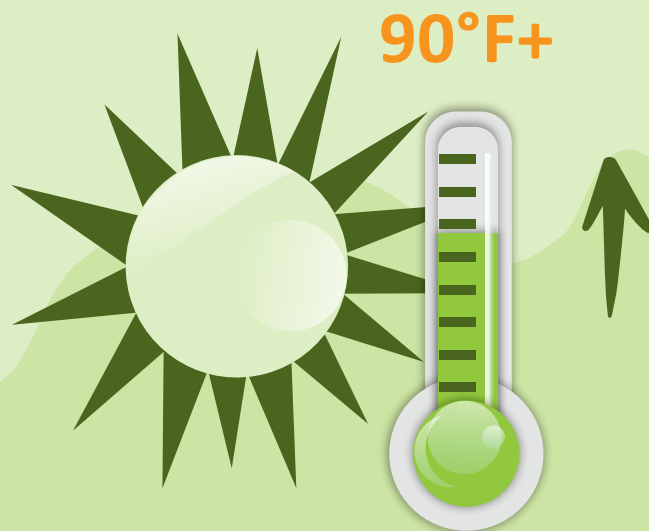
Eligible moderate-needs Oregon preschoolers receiving adequate EI/ECSE services (2020)

Eligible children infants/toddlers receiving adequate EI/ECSE services (2020)

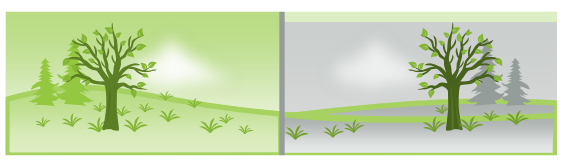
Eligible low-needs Oregon preschoolers receive adequate EI/ECSE services (2020)



Portland saw its third longest heat wave in recorded history with 8 consecutive days of temperatures of 90 degrees or higher, spanning from July 24 - 31, 2022



## Extreme Weather Events 2021



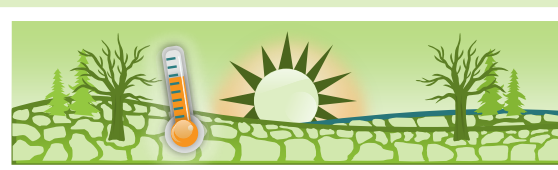
7 days poor air quality



3/10 average daily risk of wildfires



17 days extreme heat



280/500 average intensity of drought