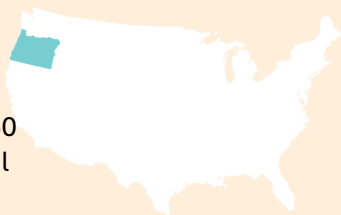


# 2024 OCDC Community Assessment FACTS AND DEMOGRAPHICS

Presented by the Oregon Child Development Coalition

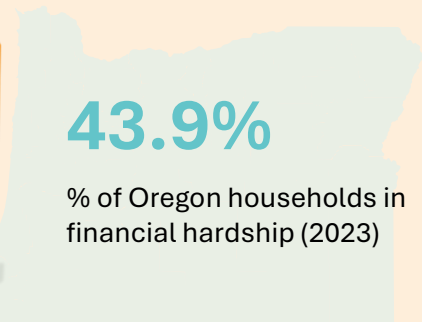
## 46 of 50

Oregon state ranks 46th out of 50 with higher prevalence of mental illness and lower access to care



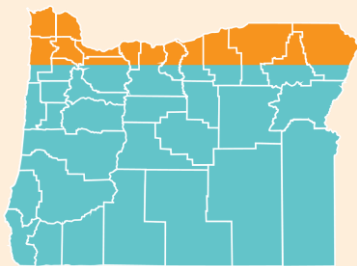
## 43.9%

% of Oregon households in financial hardship (2023)



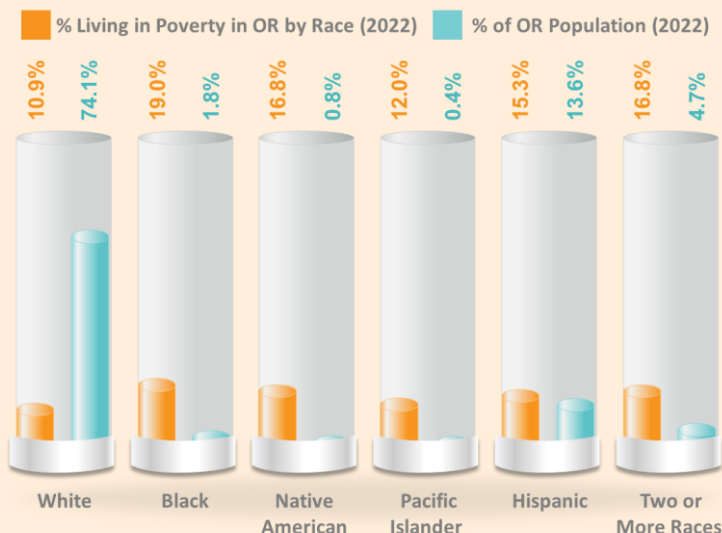
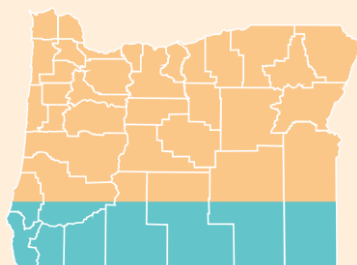
## 35 of 36

35 Out of 36 Oregon counties are a childcare desert for infants/toddlers (2022)



## 11 of 36

Oregon counties are a childcare desert for Children ages 3-5 (2022)



## \$29.73

2023

Wage Oregon households must earn per hour to afford rent on a two-bedroom without paying more than 30% of their income on housing

## \$27.65

2021

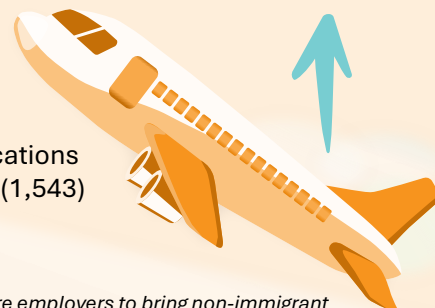
## \$25.14

2020



## 443%

Increase in H-2A\* certifications in Oregon between 2021 (1,543) and 2023 (8,378)



\* This program allows agriculture employers to bring non-immigrant foreign workers to the U.S. to perform agriculture labor

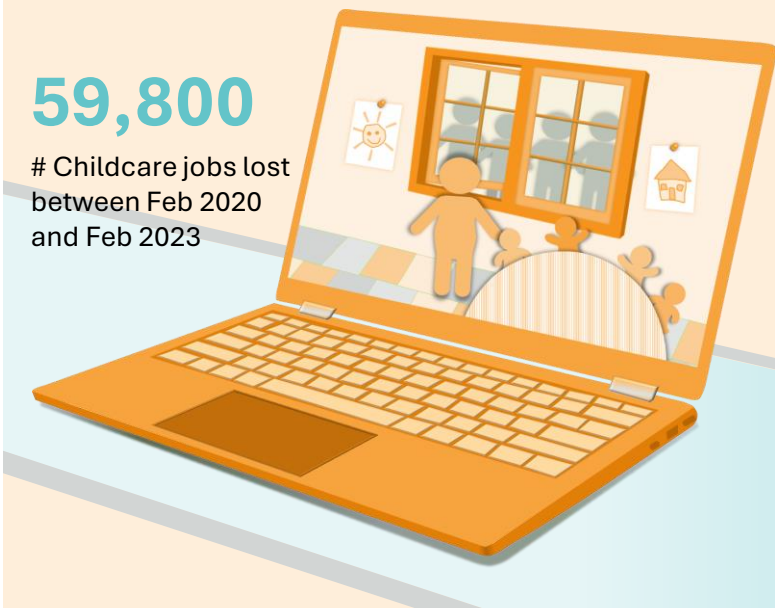
# 2024 OCDC Community Assessment FACTS AND DEMOGRAPHICS

Presented by the Oregon Child Development Coalition



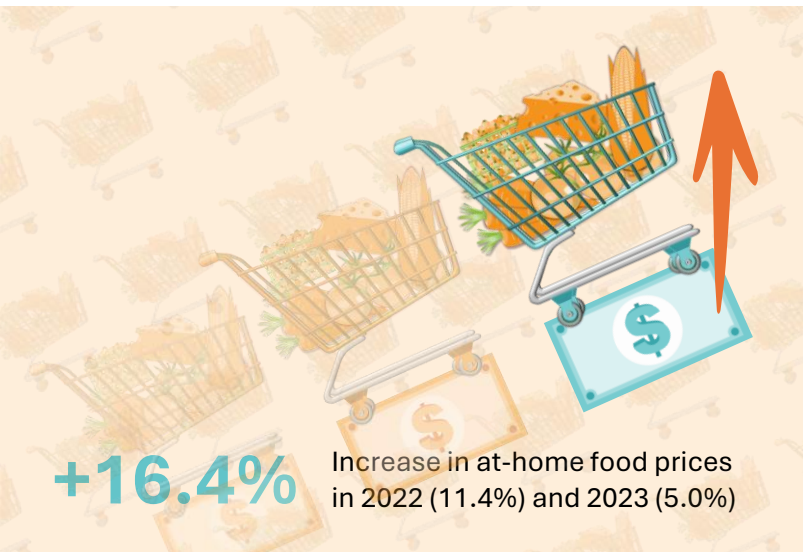
**21%**

of Oregon renter households were living in poverty (2021)



**59,800**

# Childcare jobs lost between Feb 2020 and Feb 2023

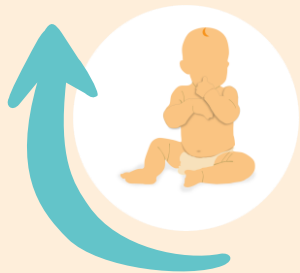


**+16.4%**

Increase in at-home food prices in 2022 (11.4%) and 2023 (5.0%)

**15.4%**

of Oregon children under 18 in food insecure households (2021)

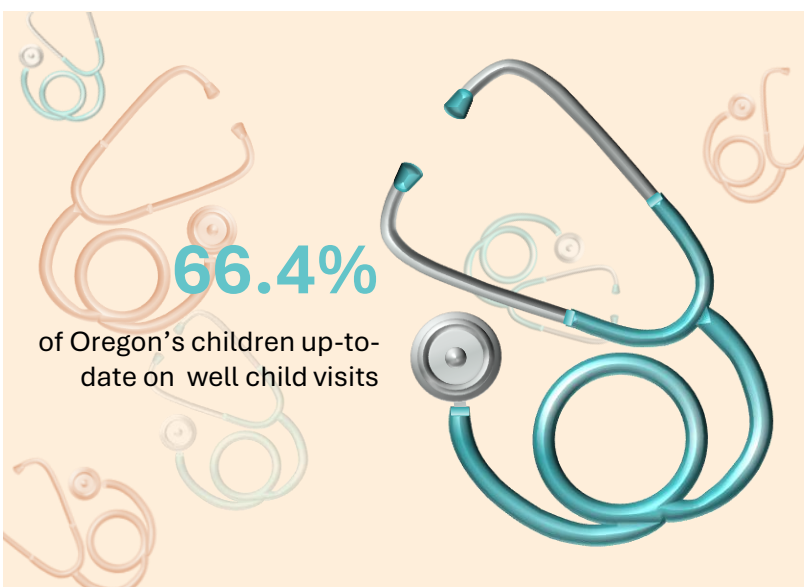


**82%**

of Oregon Infants/toddlers without access to regulated childcare slot 2022

**63%**

% of Oregon preschoolers without access to regulated childcare slot 2020



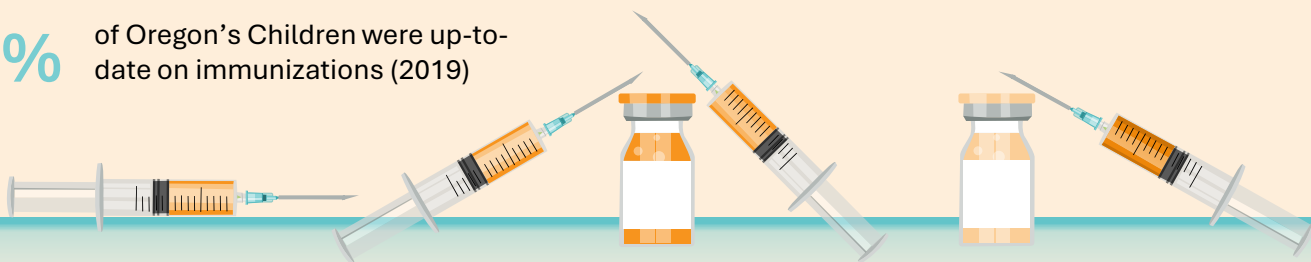
**66.4%**

of Oregon's children up-to-date on well child visits

# 2024 OCDC Community Assessment FACTS AND DEMOGRAPHICS

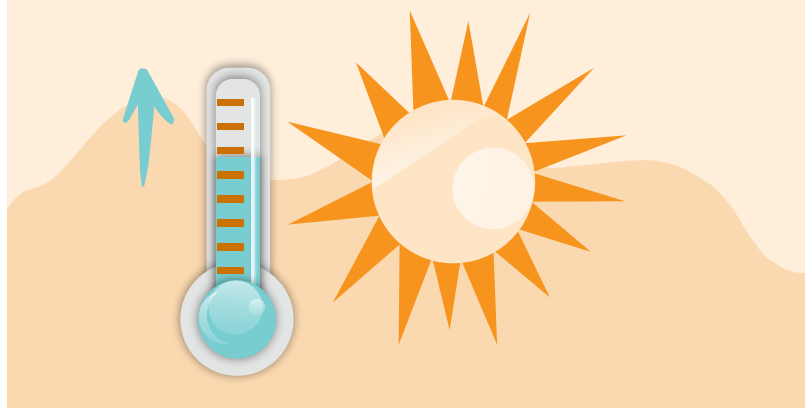
Presented by the Oregon Child Development Coalition

**71%** of Oregon's Children were up-to-date on immunizations (2019)



Oregon needs nearly 3,000 more people to fill the demand for childcare workers (2024)

2023 was the hottest year on record in the world

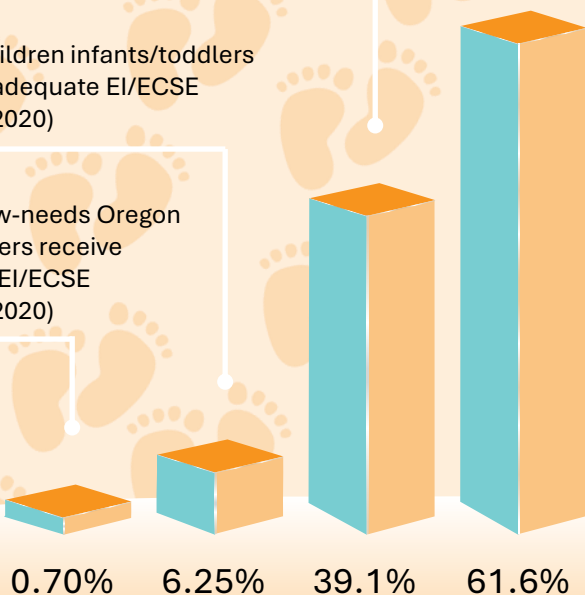


Eligible high-needs preschoolers receiving adequate EI/ECSE\* services (2020)

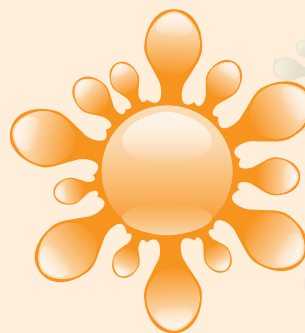
Eligible moderate-needs Oregon preschoolers receiving adequate EI/ECSE services (2020)

Eligible children infants/toddlers receiving adequate EI/ECSE services (2020)

Eligible low-needs Oregon preschoolers receive adequate EI/ECSE services (2020)



\* Early Intervention and Early Childhood Special Education



An inspection of pre- and post-pandemic mental and physical health reveals signs of collective trauma among all age cohorts (American Psychological Association, 2023)

**10%**

The cost of living in Oregon is 10% higher than the national average (20% higher in the Portland Metro area)

